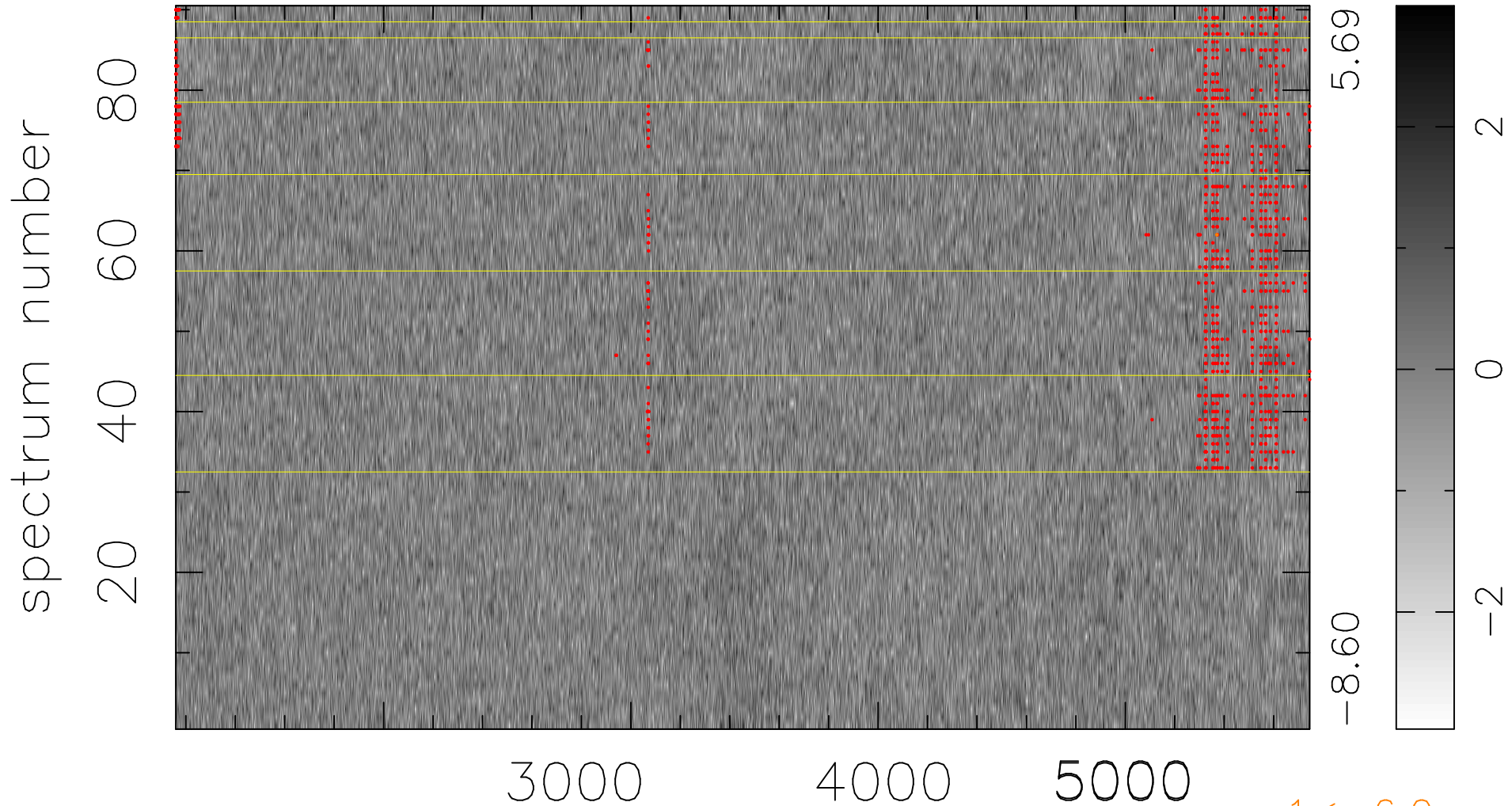


$$\chi(\lambda, t) = ( \text{Data} - \text{Model AC}_5\text{F} ) / \sigma \chi$$

$$\chi^2 / (412830 - 4962) = 0.921 \Rightarrow 1.007$$

4587 × 90



bad:1009=0.24%  $\lambda$  (Å)  $z = 0.73561$