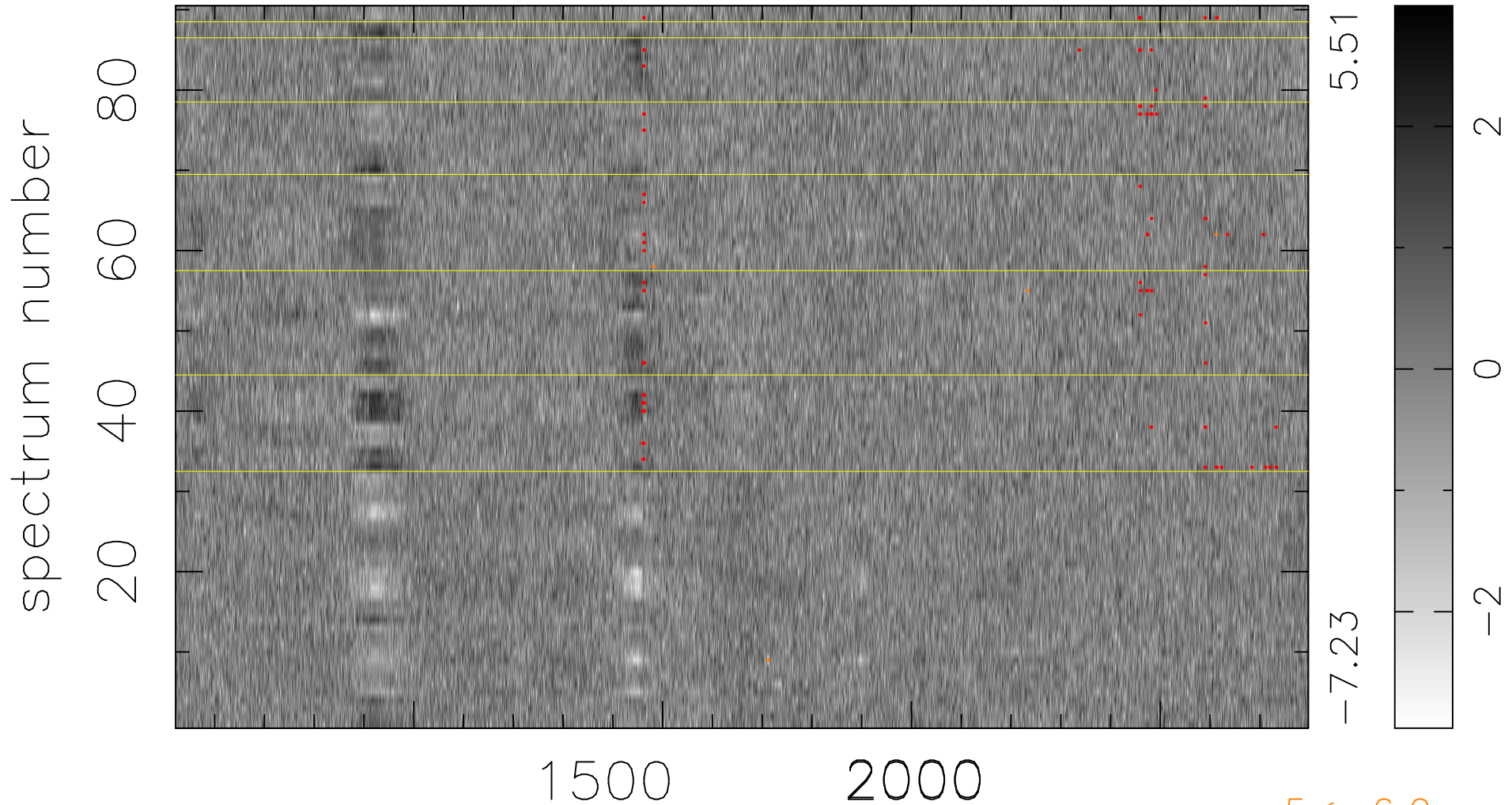


$$\chi(\lambda, t) = ( \text{Data} - \text{Model } AC_5 ) / \sigma \chi$$

$$\chi^2 / (409680 - 5234) = 1.002 \Rightarrow 1.005$$

4552x90



bad:110=0.027%  $\lambda$  (Å)  $z = 2.58078$

5 < -6.0 $\sigma$