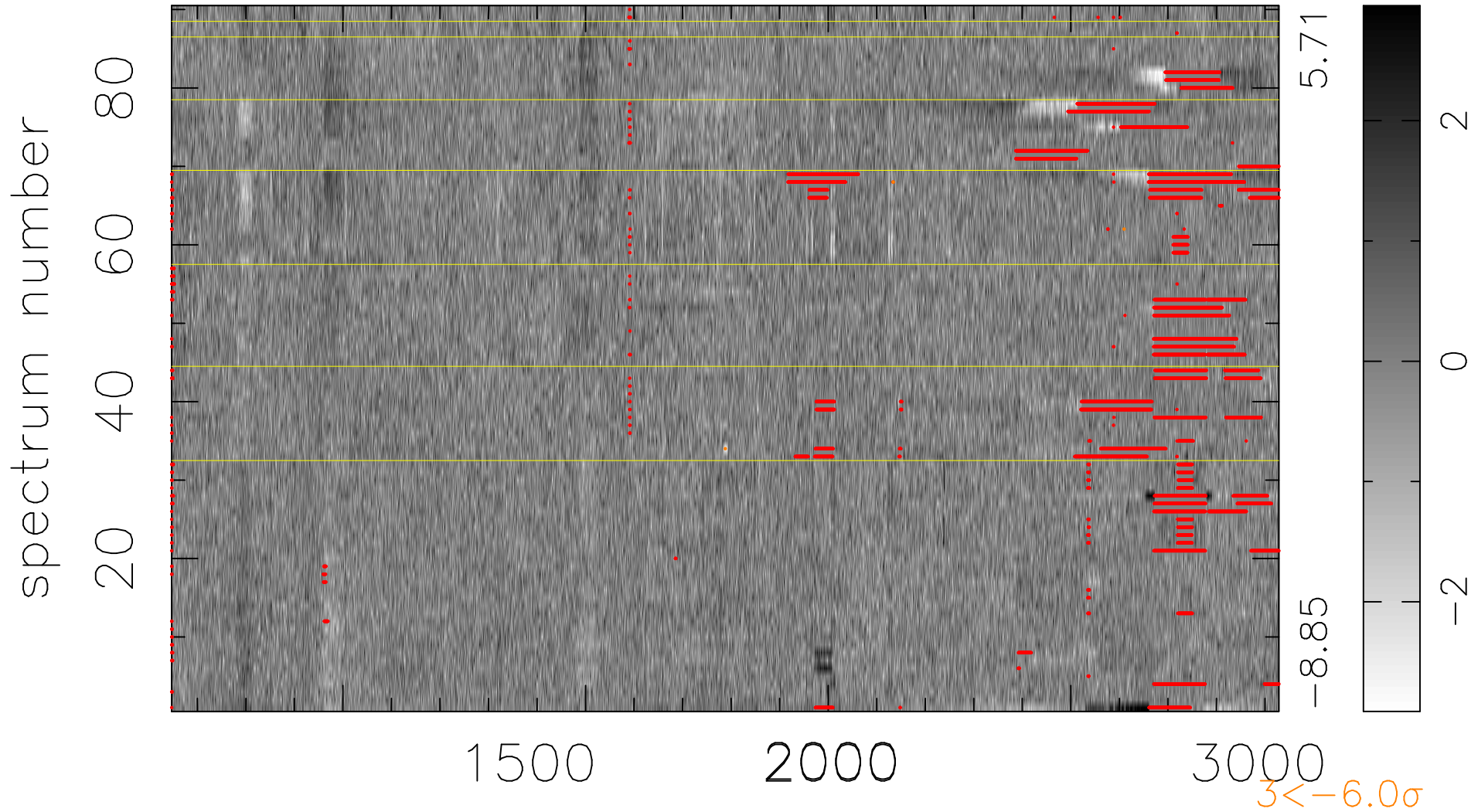


$$\chi(\lambda, t) = ( \text{Data} - \text{Model AC}_5\text{B}_7\text{F} ) / \sigma \chi$$

$$\chi^2 / (410760 - 5465) = 0.967 \Rightarrow 1.006$$

4564x90



bad:12213=3.0%  $\lambda$  (Å)  $z = 2.37504$