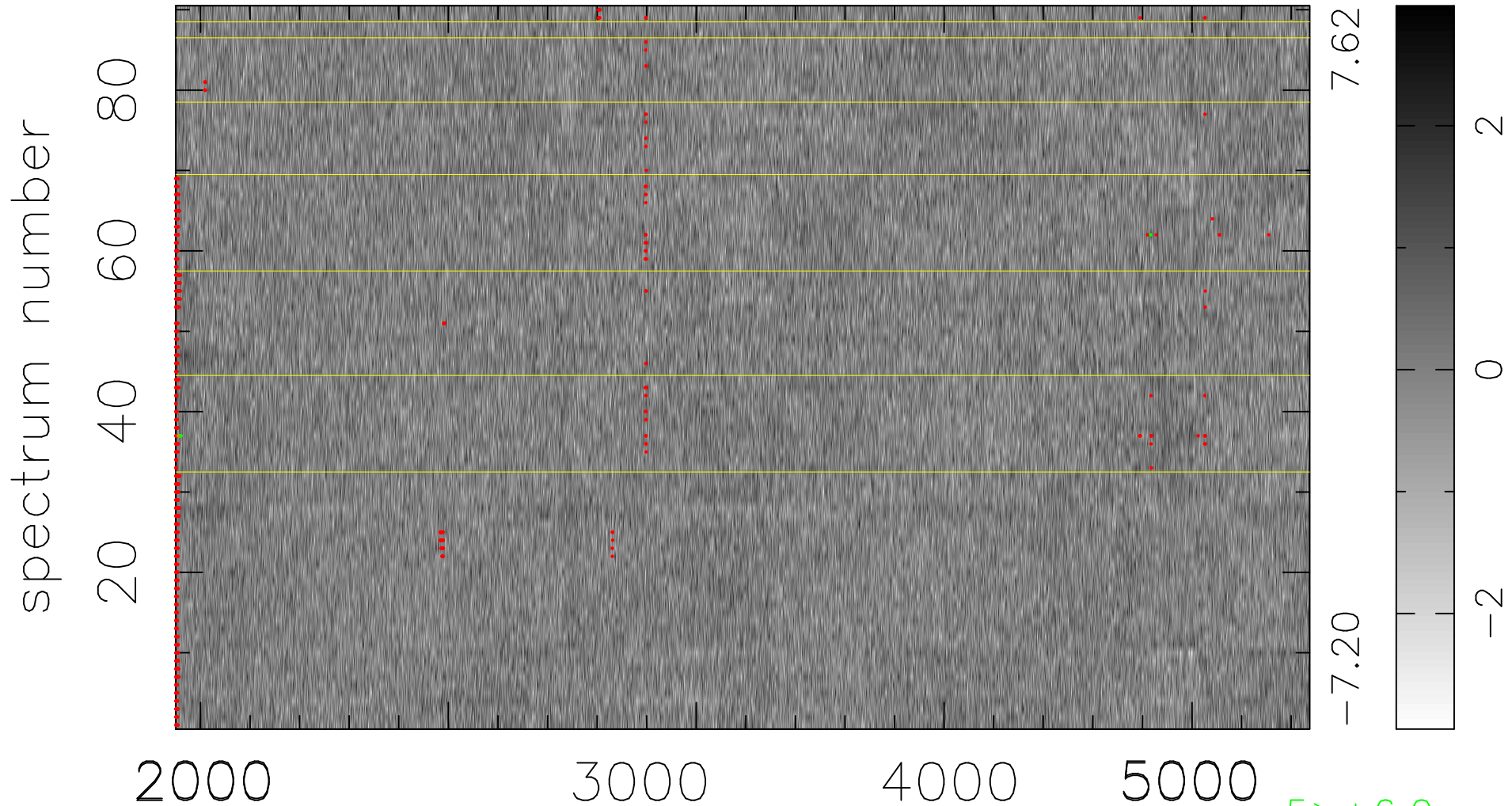


$$\chi(\lambda, t) = (\text{Data} - \text{Model } AC_5) / \sigma \chi$$

$$\chi^2 / (411750 - 4863) = 0.936 \Rightarrow 1.002$$

4575x90



bad:838=0.20%

λ (Å) $z = 0.84865$

5 > +6.0 σ

4 < -6.0 σ