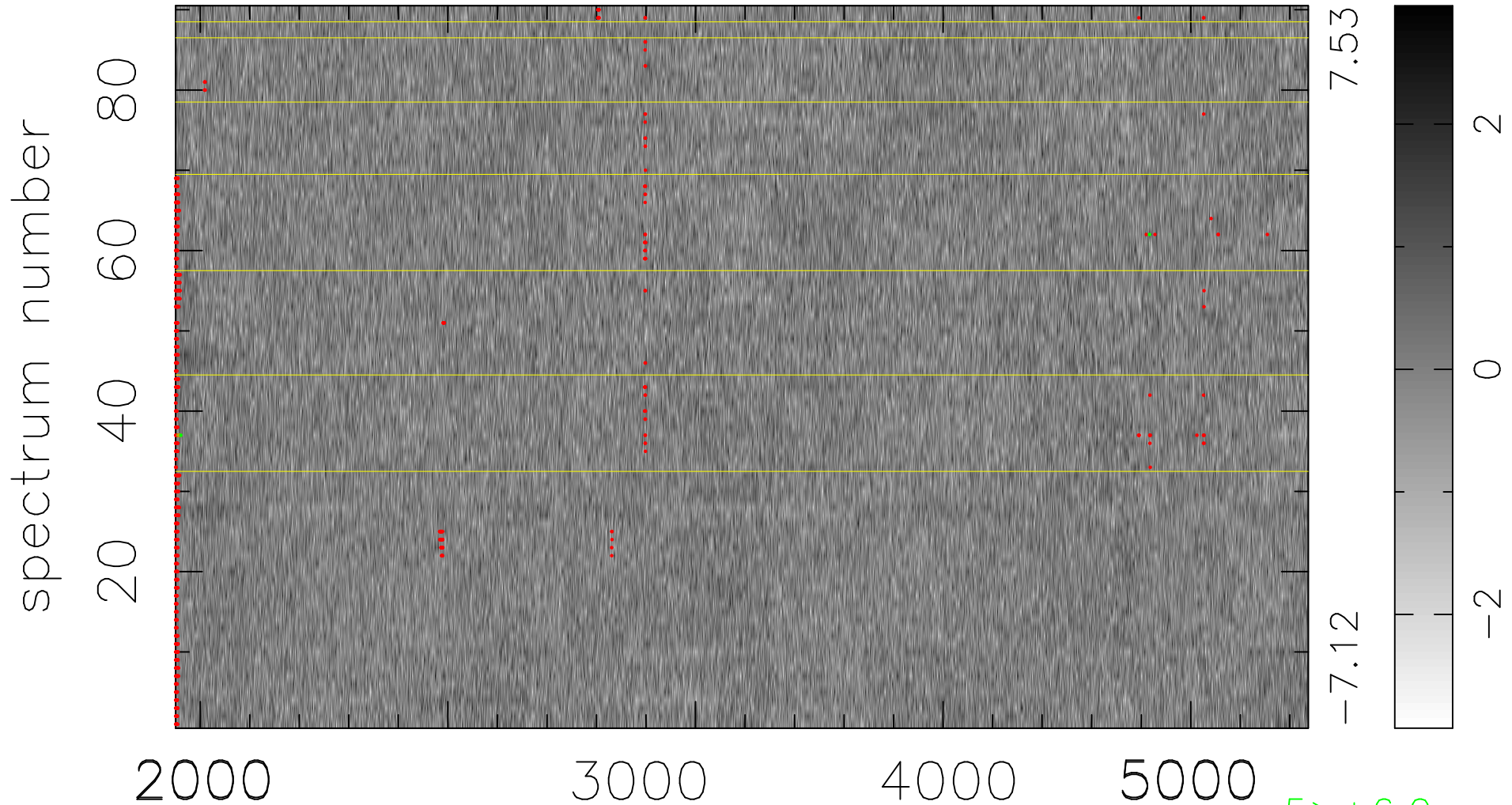


$$\chi(\lambda, t) = ( \text{Data} - \text{Model } \text{AC}_5\text{B}_3\text{F} ) / \sigma \chi$$

$$\chi^2 / (411750 - 5106) = 0.930 \Rightarrow 0.995$$

4575x90



bad:838=0.20%

$\lambda$  (Å)  $z = 0.84865$

5 > +6.0σ

4 < -6.0σ