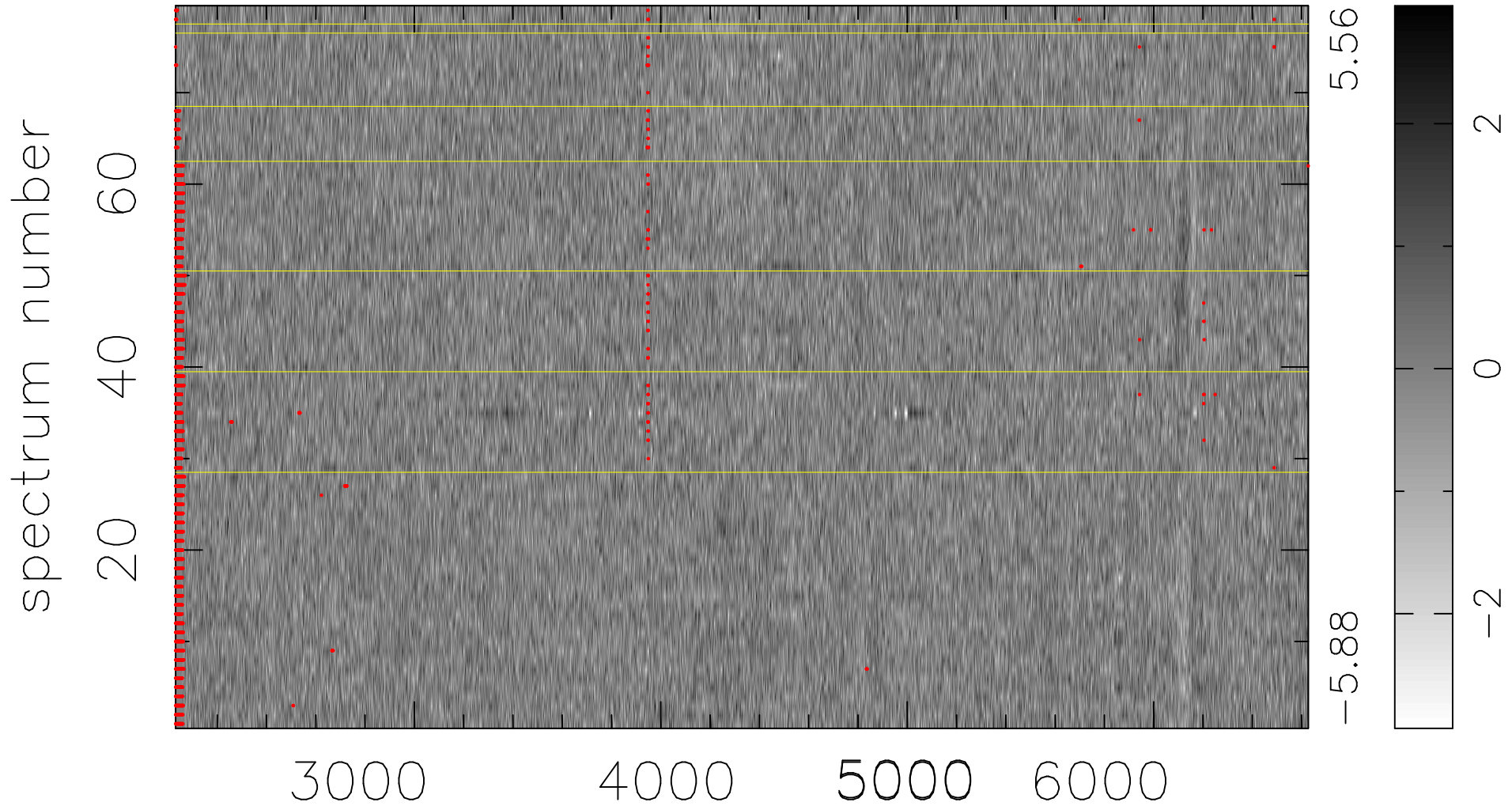


$$\chi(\lambda, t) = ( \text{Data} - \text{Model } \text{AC}_5\text{B}_4\text{F} ) / \sigma \chi$$

$$\chi^2 / (363163 - 5167) = 0.929 \Rightarrow 1.000$$

4597x79



bad:2127=0.59%  $\lambda$  (Å)  $z = 0.41804$