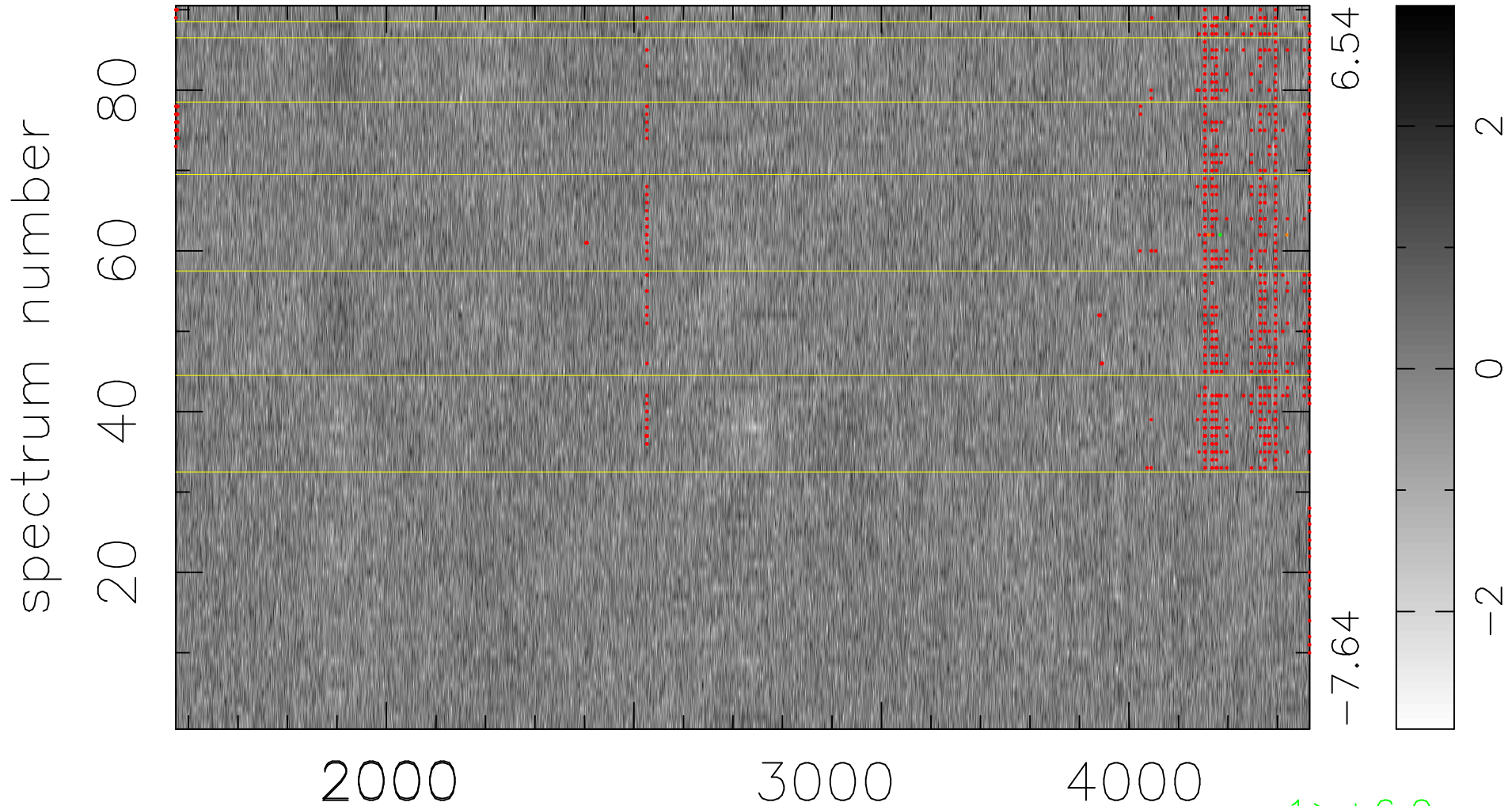


$$\chi(\lambda,t) = (\text{Data} - \text{Model } AC_5) / \sigma \chi$$

$$\chi^2 / (412380 - 4956) = 0.879 \Rightarrow 1.006$$

4582x90



bad:876=0.21%

λ (Å) $z = 1.19437$

1 > +6.0 σ

2 < -6.0 σ