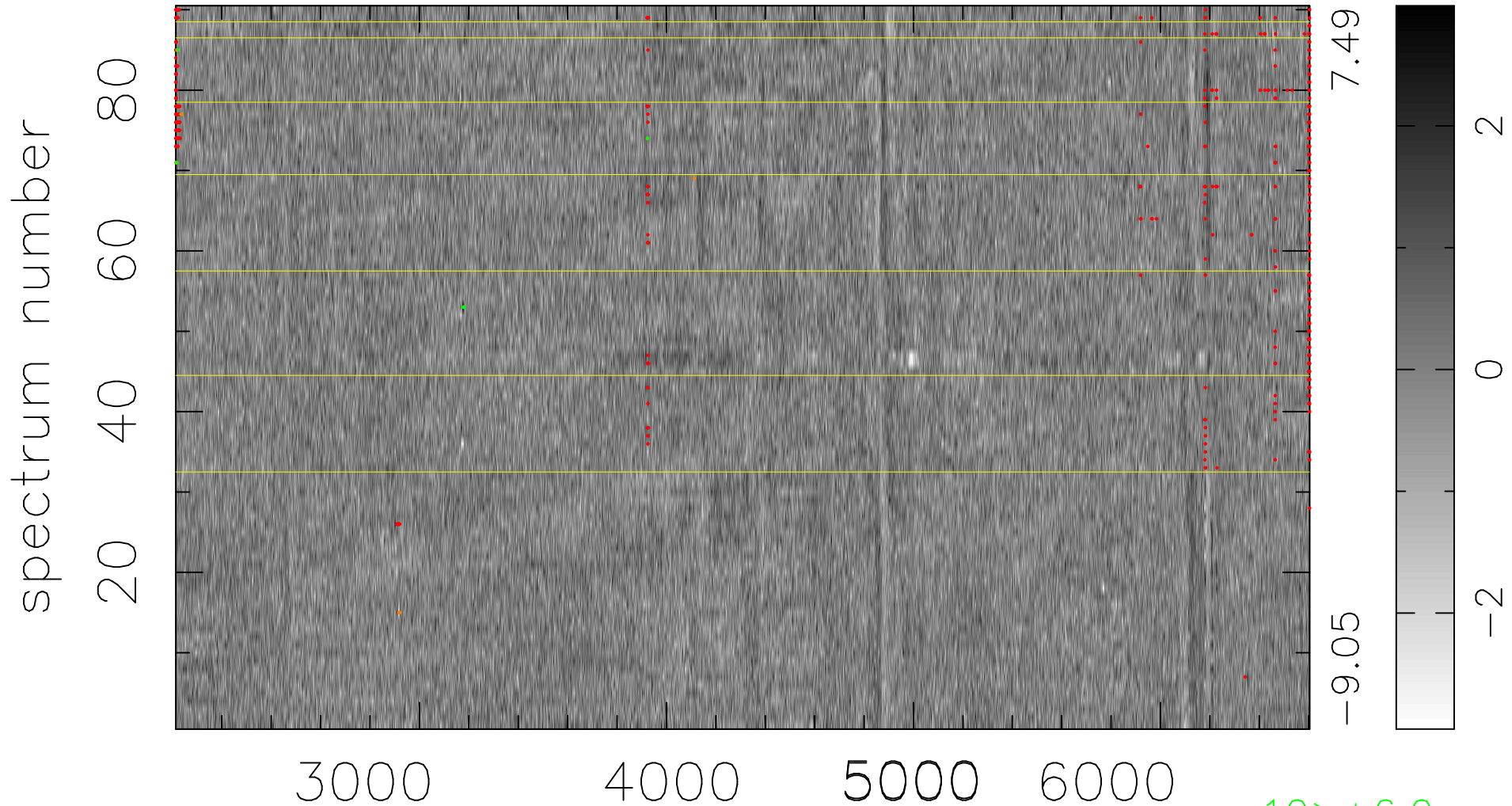


$$\chi(\lambda, t) = (\text{Data} - \text{Model } AC_5B_4F) / \sigma \chi$$

$$\chi^2 / (413190 - 5221) = 1.017 \Rightarrow 1.003$$

4591 × 90



bad:455=0.11%

λ (Å) $z = 0.42569$

10 > +6.0σ

11 < -6.0σ