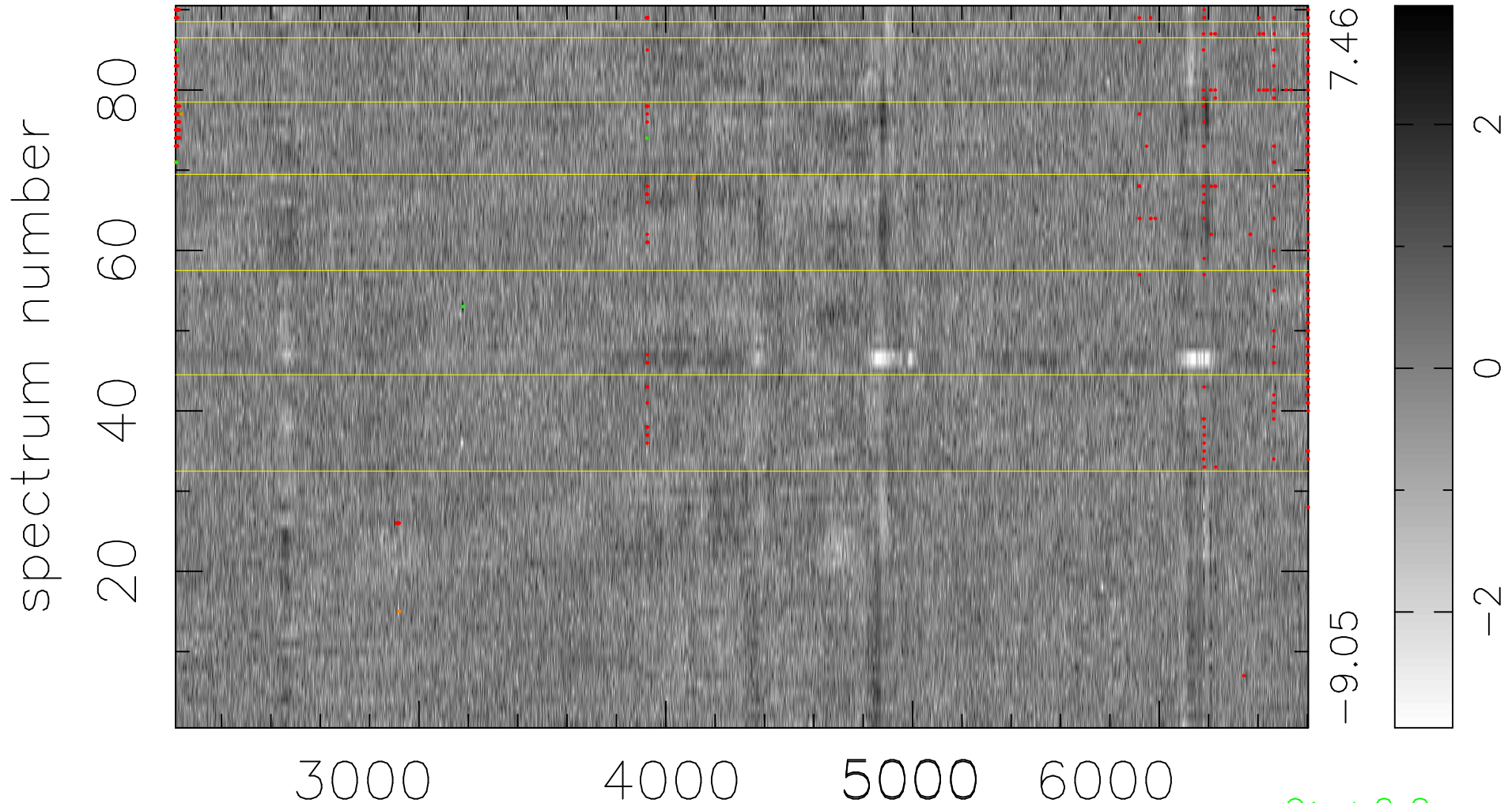


$$\chi(\lambda, t) = (\text{Data} - \text{Model AC}_5\text{F}) / \sigma \chi$$

$$\chi^2 / (413190 - 5072) = 1.072 \Rightarrow 1.000$$

4591 × 90



7.46

-9.05

2

0

-2

9 > +6.0σ

11 < -6.0σ

bad:455=0.11%

λ (Å) z = 0.42569