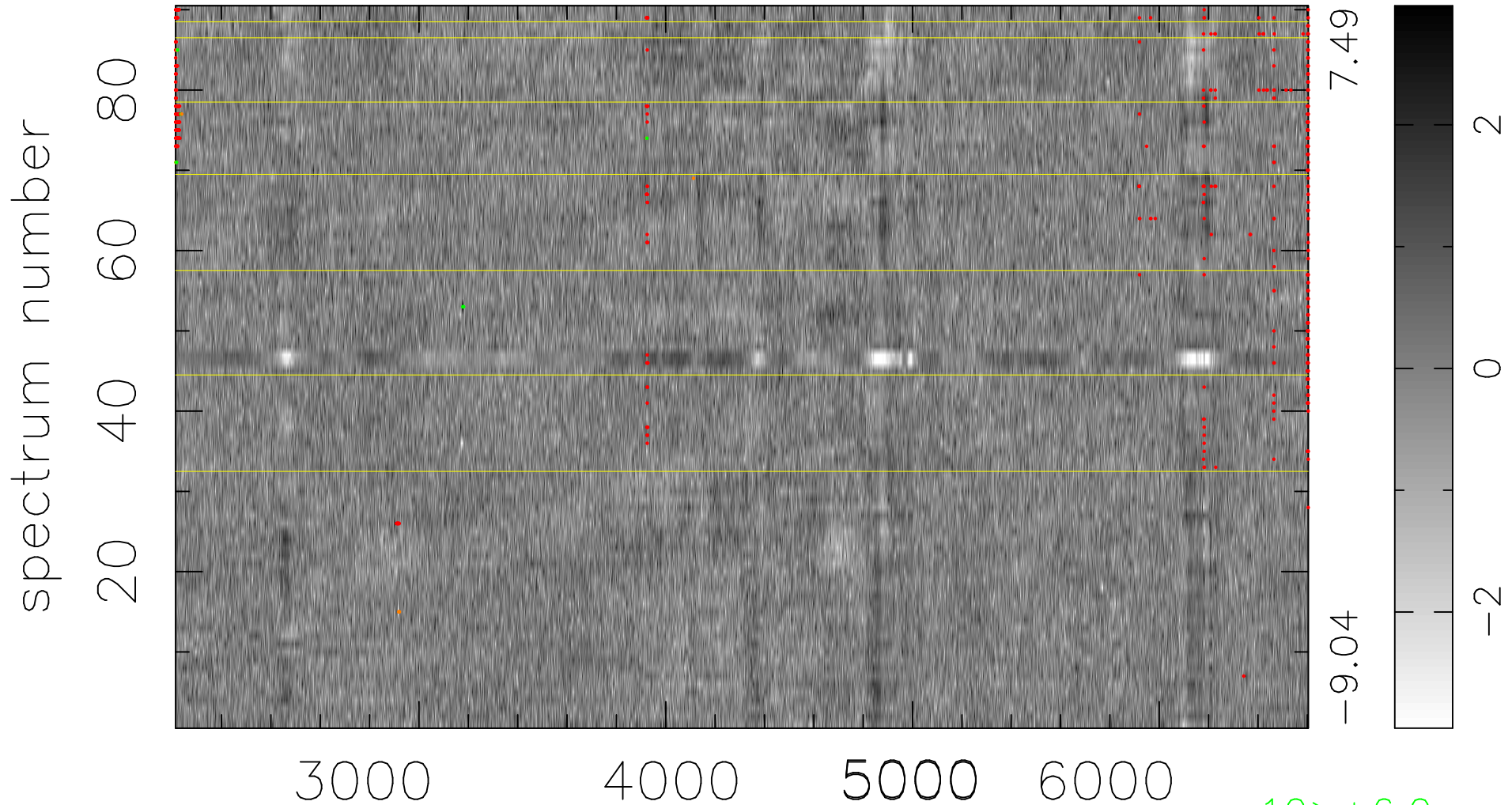


$$\chi(\lambda,t) = (\text{Data} - \text{Model } AC_5) / \sigma \chi$$

$$\chi^2 / (413190 - 4982) = 1.266 \Rightarrow 1.001$$

4591 × 90



bad:455=0.11%

λ (Å) $z = 0.42569$

10 > +6.0σ

11 < -6.0σ