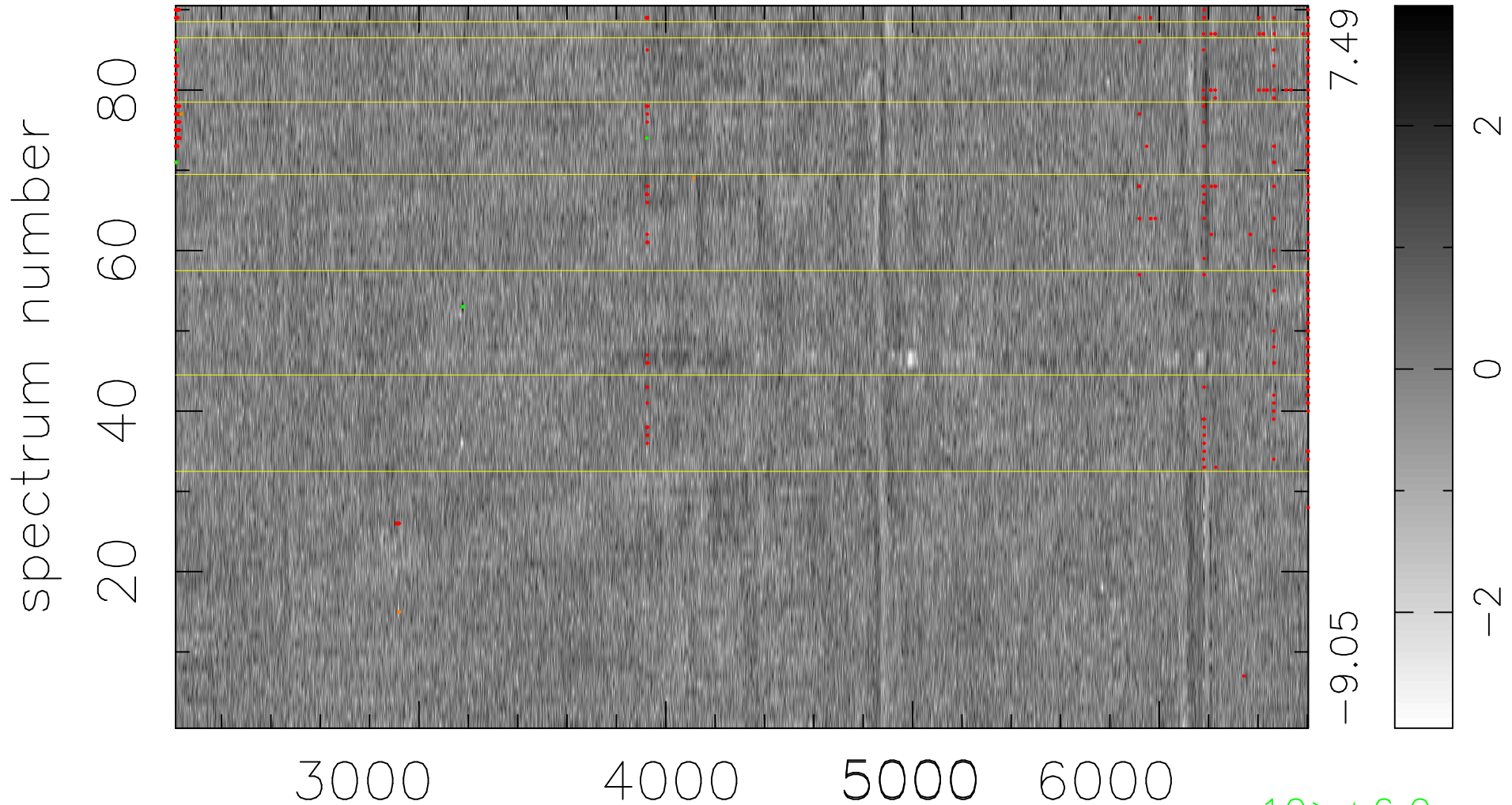


$$\chi(\lambda, t) = ( \text{Data} - \text{Model } \text{AC}_5\text{B}_4\text{F} ) / \sigma \chi$$

$$\chi^2 / (413190 - 5221) = 1.017 \Rightarrow 1.003$$

4591 × 90



bad:455=0.11%

$\lambda$  (Å)  $z = 0.42569$

10 > +6.0 $\sigma$

11 < -6.0 $\sigma$