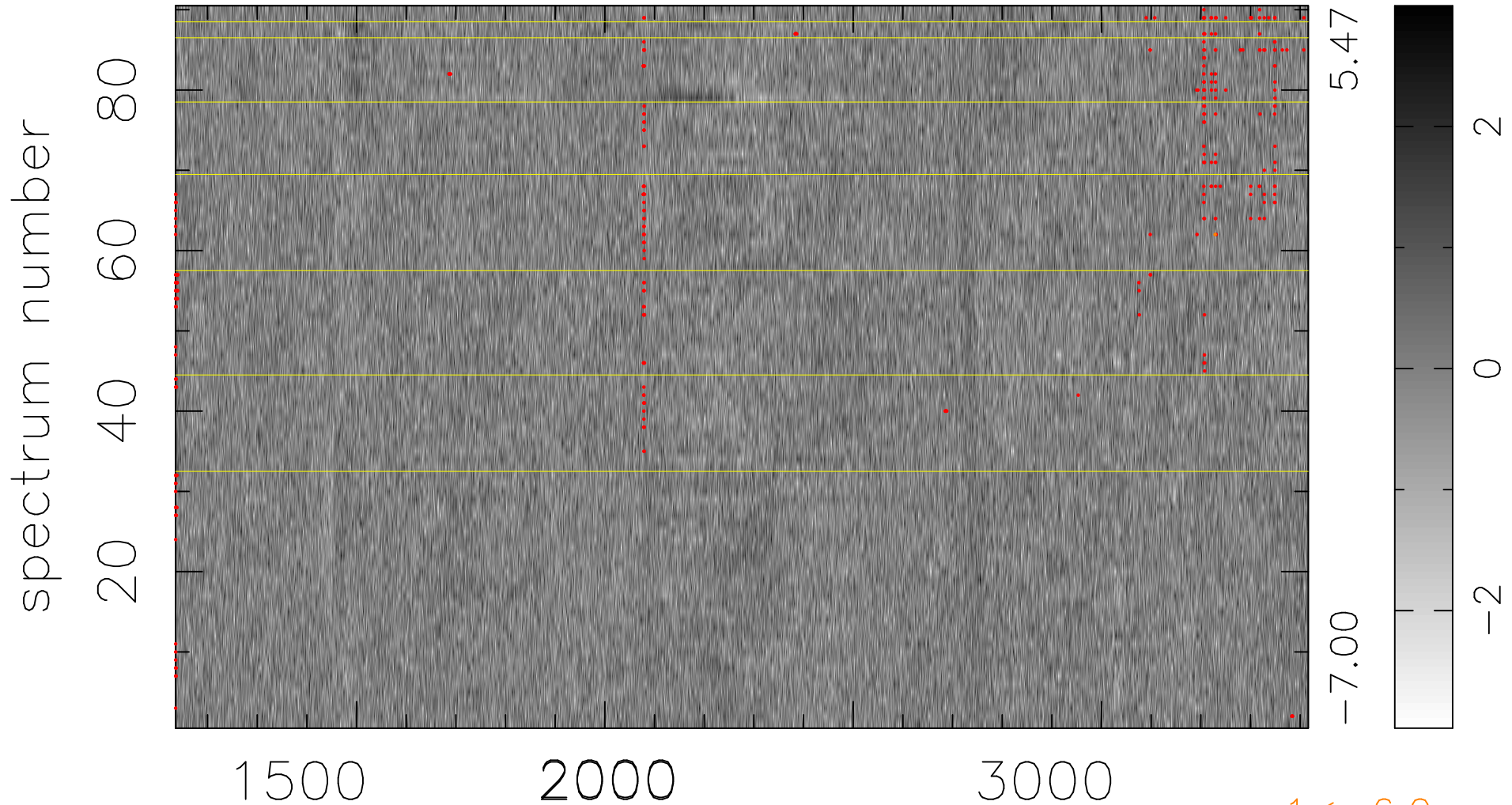


$$\chi(\lambda, t) = ( \text{Data} - \text{Model } \text{AC}_5\text{B}_5\text{F} ) / \sigma \chi$$

$$\chi^2 / (410580 - 5253) = 0.888 \Rightarrow 1.008$$

4562x90



bad:330=0.080%  $\lambda$  (Å)  $z = 1.69635$