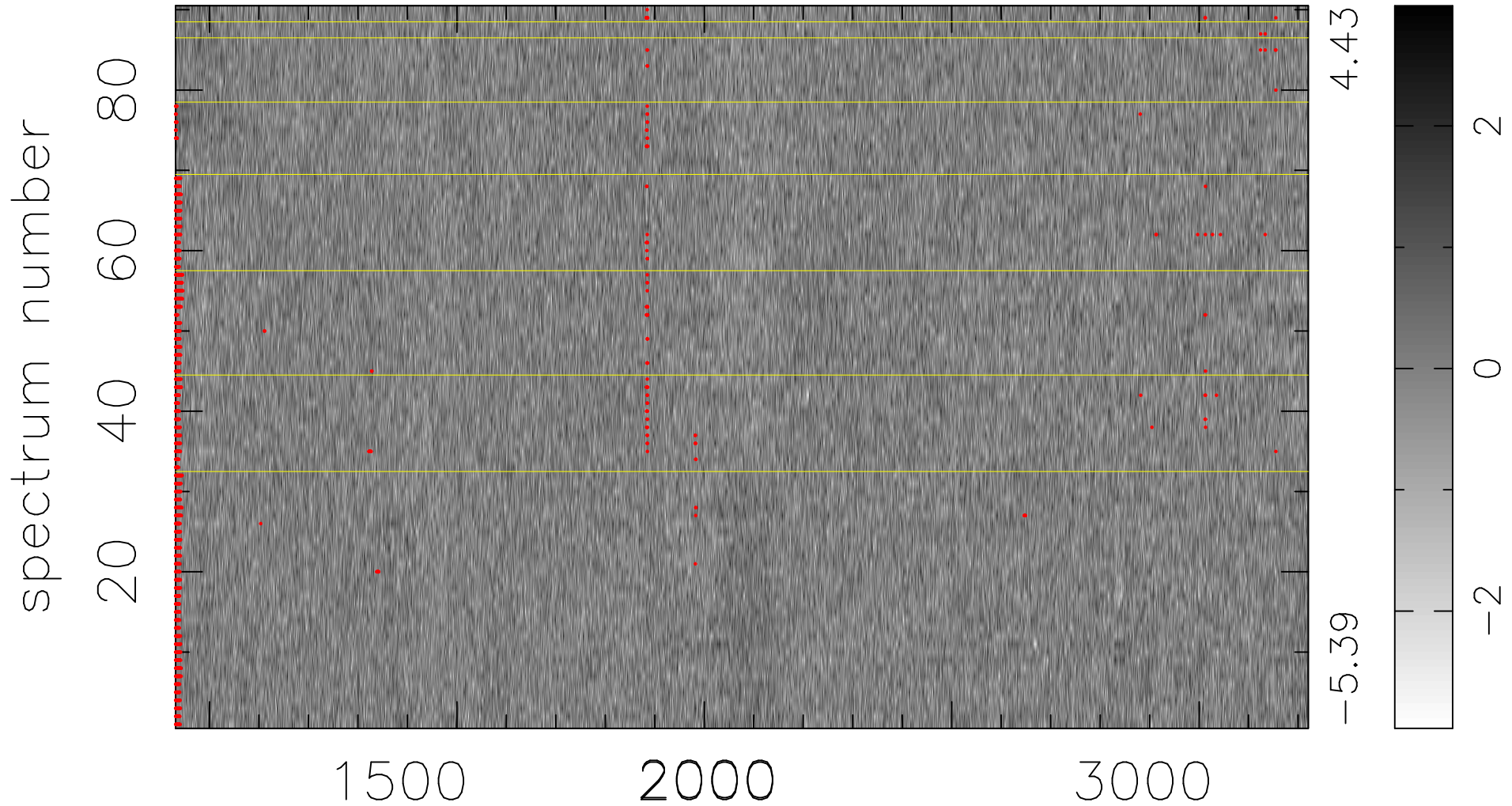


$$\chi(\lambda, t) = ( \text{Data} - \text{Model } \text{AC}_5\text{B}_6\text{F} ) / \sigma \chi$$

$$\chi^2 / (412110 - 5361) = 0.944 \Rightarrow 1.008$$

4579x90



bad:1547=0.38%  $\lambda$  (Å)  $z = 1.94837$