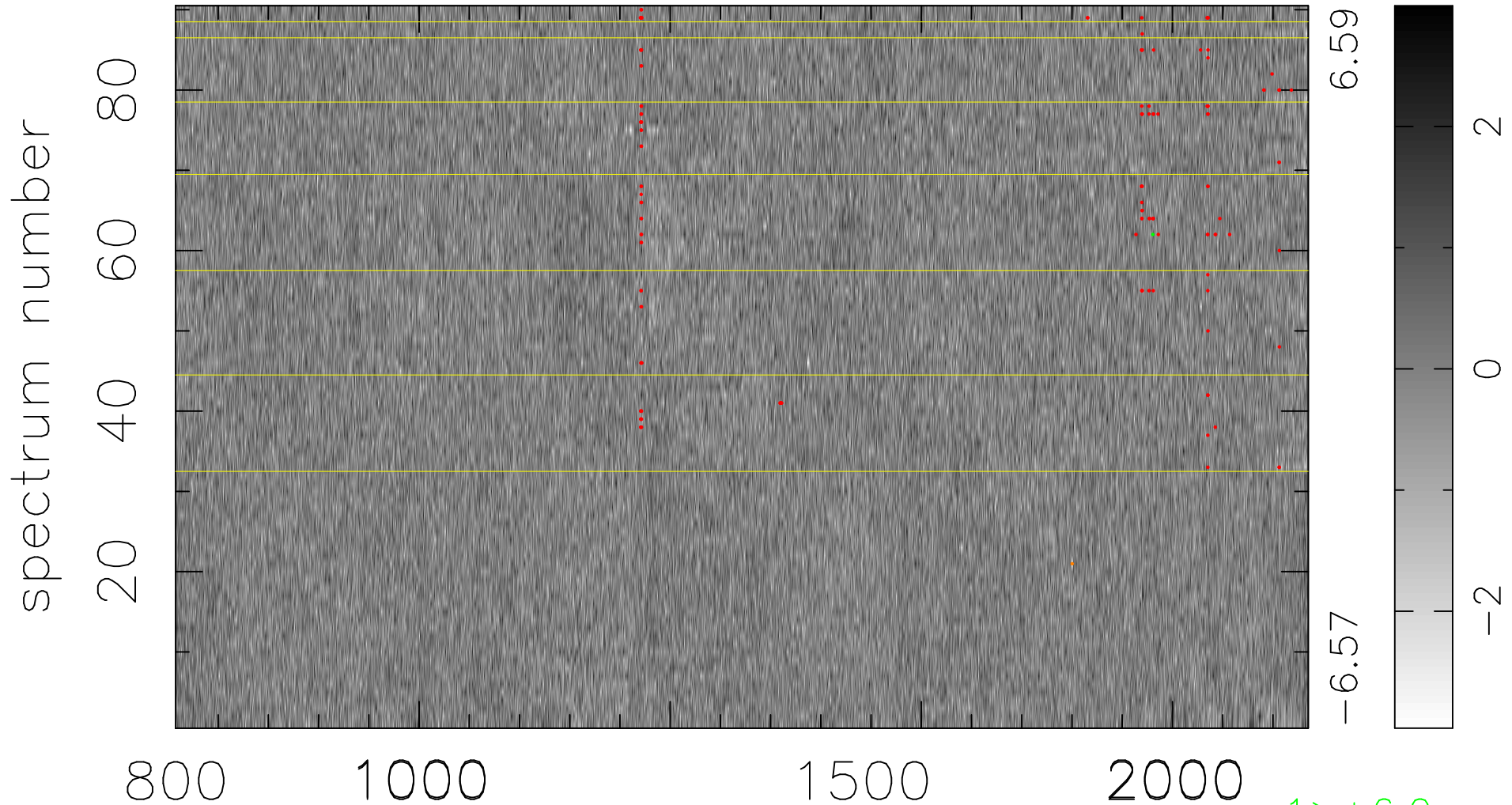


$$\chi(\lambda, t) = ( \text{Data} - \text{Model } \text{AC}_5\text{B}_6\text{F} ) / \sigma \chi$$

$$\chi^2 / (405990 - 5338) = 0.905 \Rightarrow 1.006$$

4511 × 90



bad:143=0.035%  $\lambda$  (Å)  $z = 3.55017$

1 > +6.0σ

1 < -6.0σ