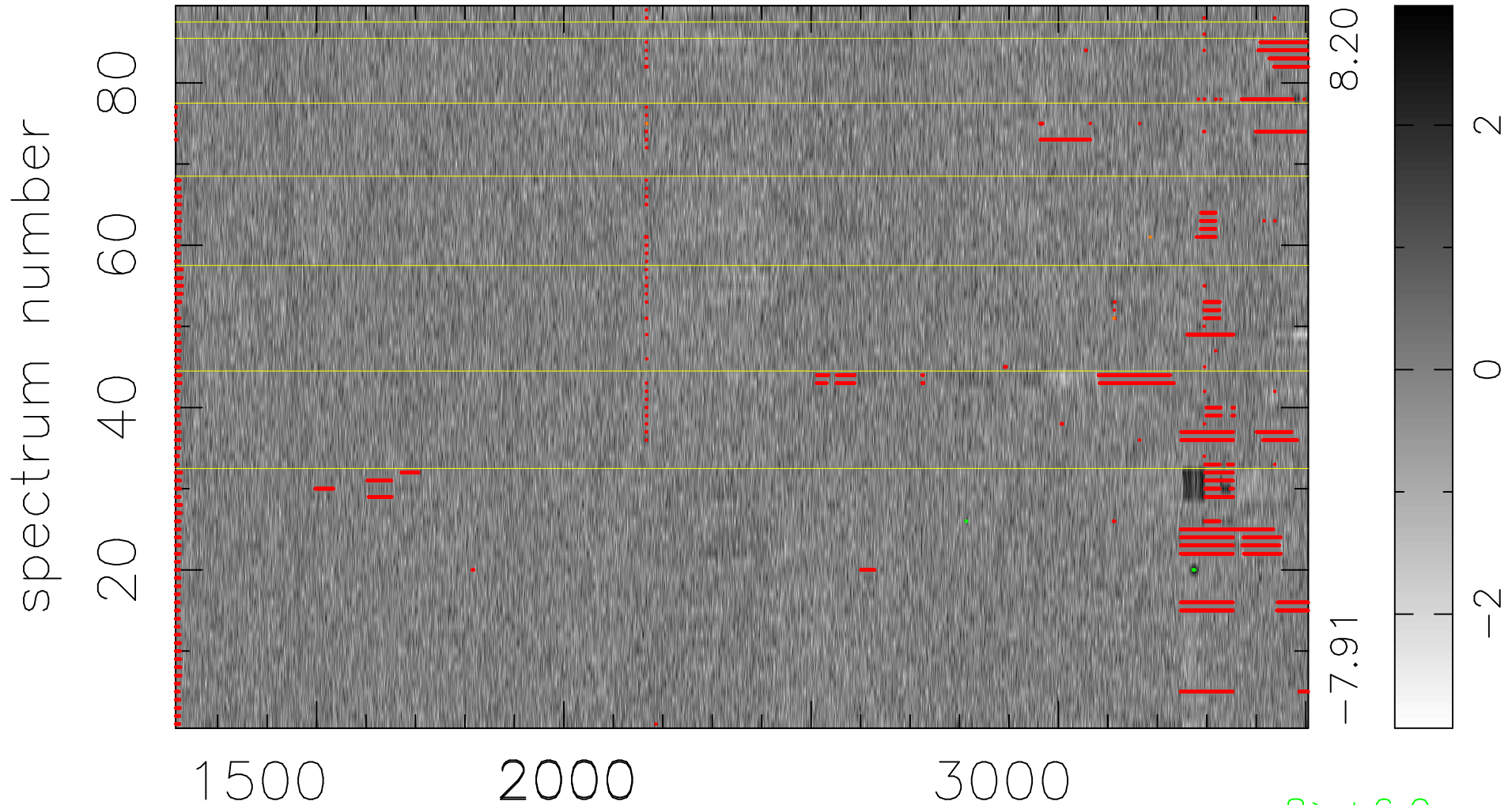


$$\chi(\lambda, t) = ( \text{Data} - \text{Model } \text{AC}_5\text{B}_5\text{F} ) / \sigma \chi$$

$$\chi^2 / (407709 - 5302) = 0.896 \Rightarrow 1.008$$

4581 × 89



bad:8349=2.0%

$\lambda$  (Å)  $z = 1.58874$

8 > +6.0σ

3 < -6.0σ