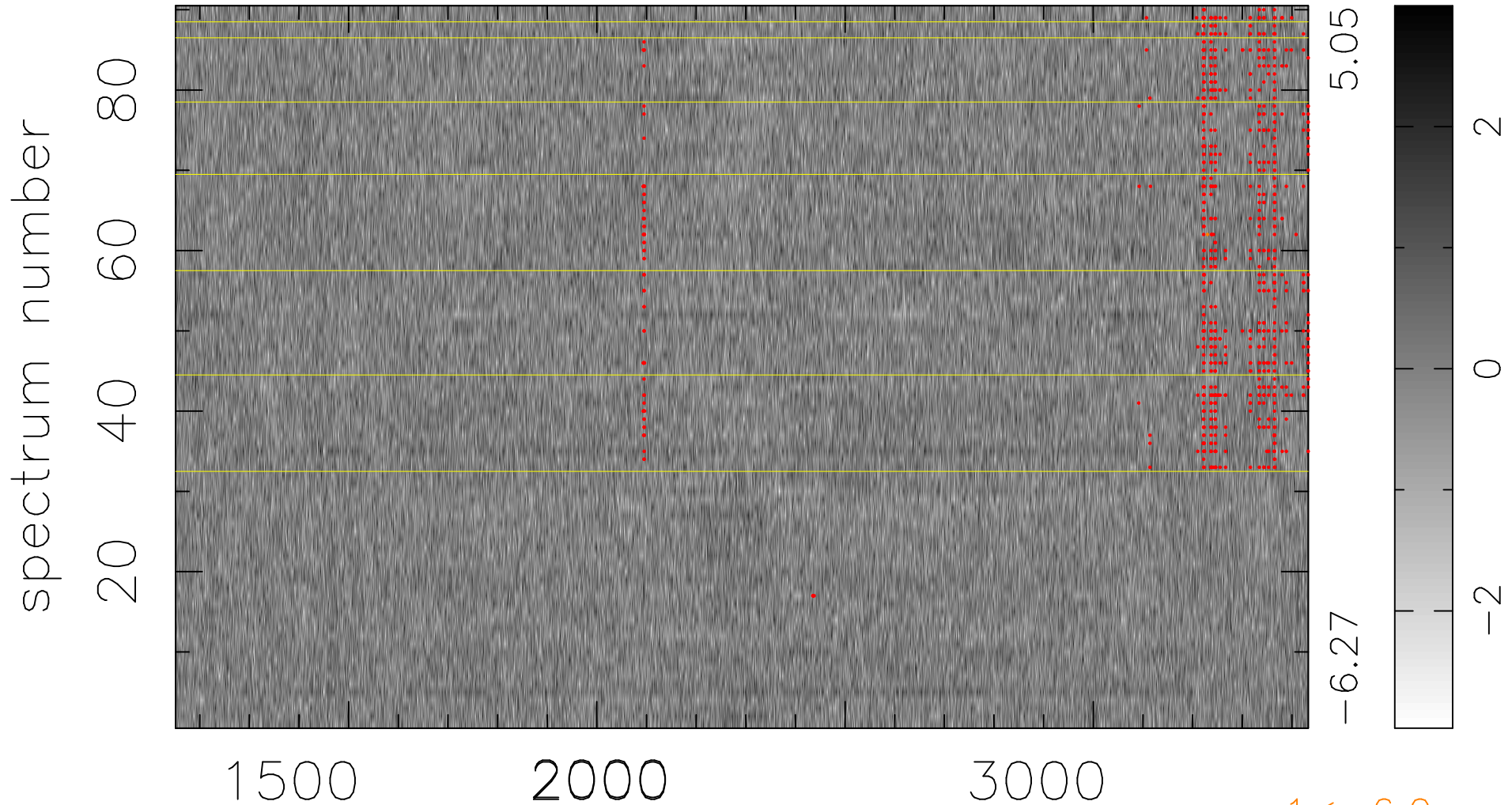


$$\chi(\lambda, t) = (\text{Data} - \text{Model } \text{AC}_5\text{B}_5\text{F}) / \sigma \chi$$

$$\chi^2 / (410760 - 5229) = 0.880 \Rightarrow 1.008$$

4564x90



bad:707=0.17%

λ (Å) $z = 1.67616$

$1 < -6.0\sigma$