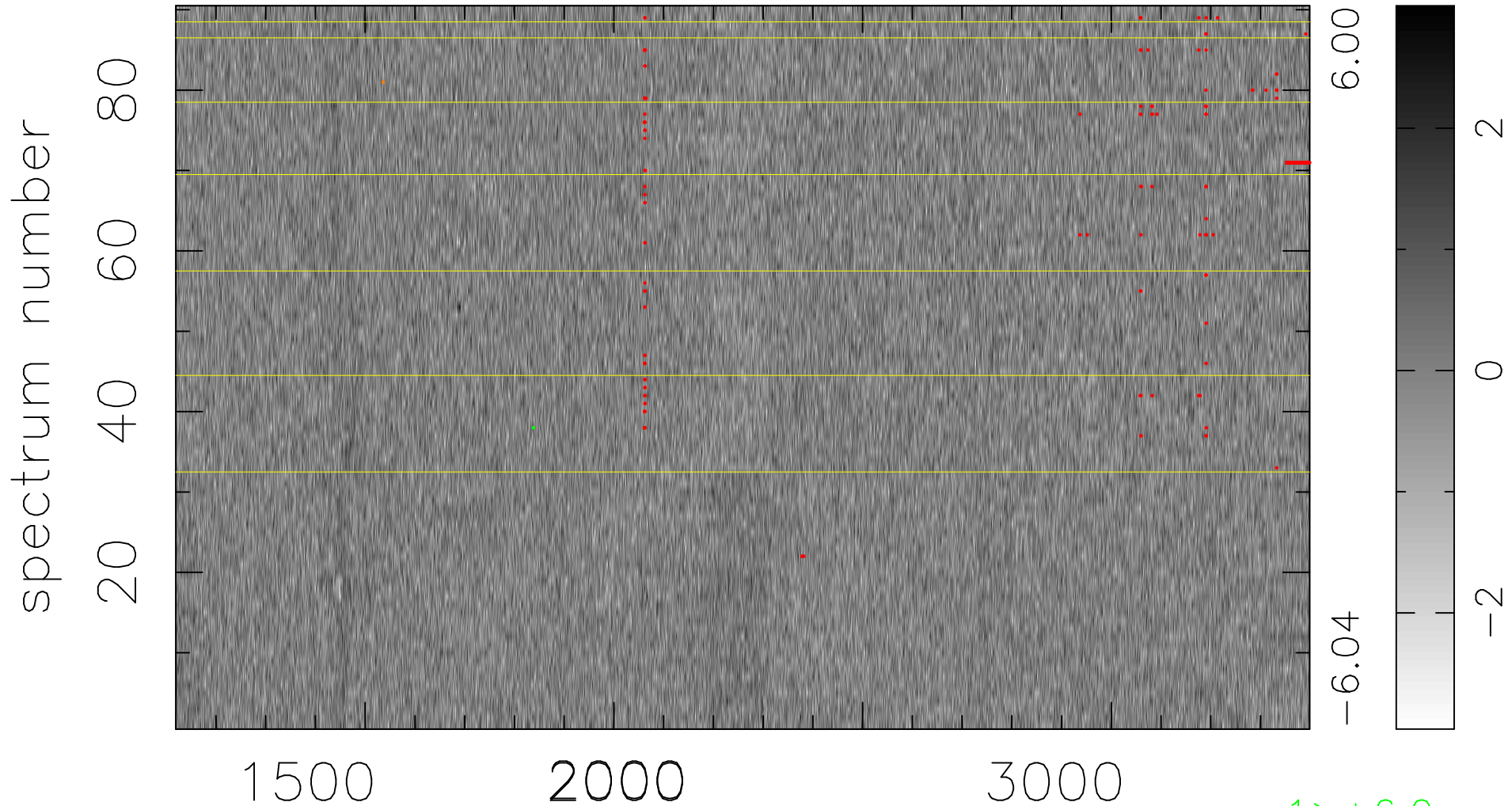


$$\chi(\lambda, t) = ( \text{Data} - \text{Model } \text{AC}_5\text{B}_5\text{F} ) / \sigma \chi$$

$$\chi^2 / (410400 - 5311) = 0.894 \Rightarrow 1.008$$

4560x90



bad:230=0.056%  $\lambda$  (Å)  $z = 1.71678$

1 > +6.0 $\sigma$

1 < -6.0 $\sigma$