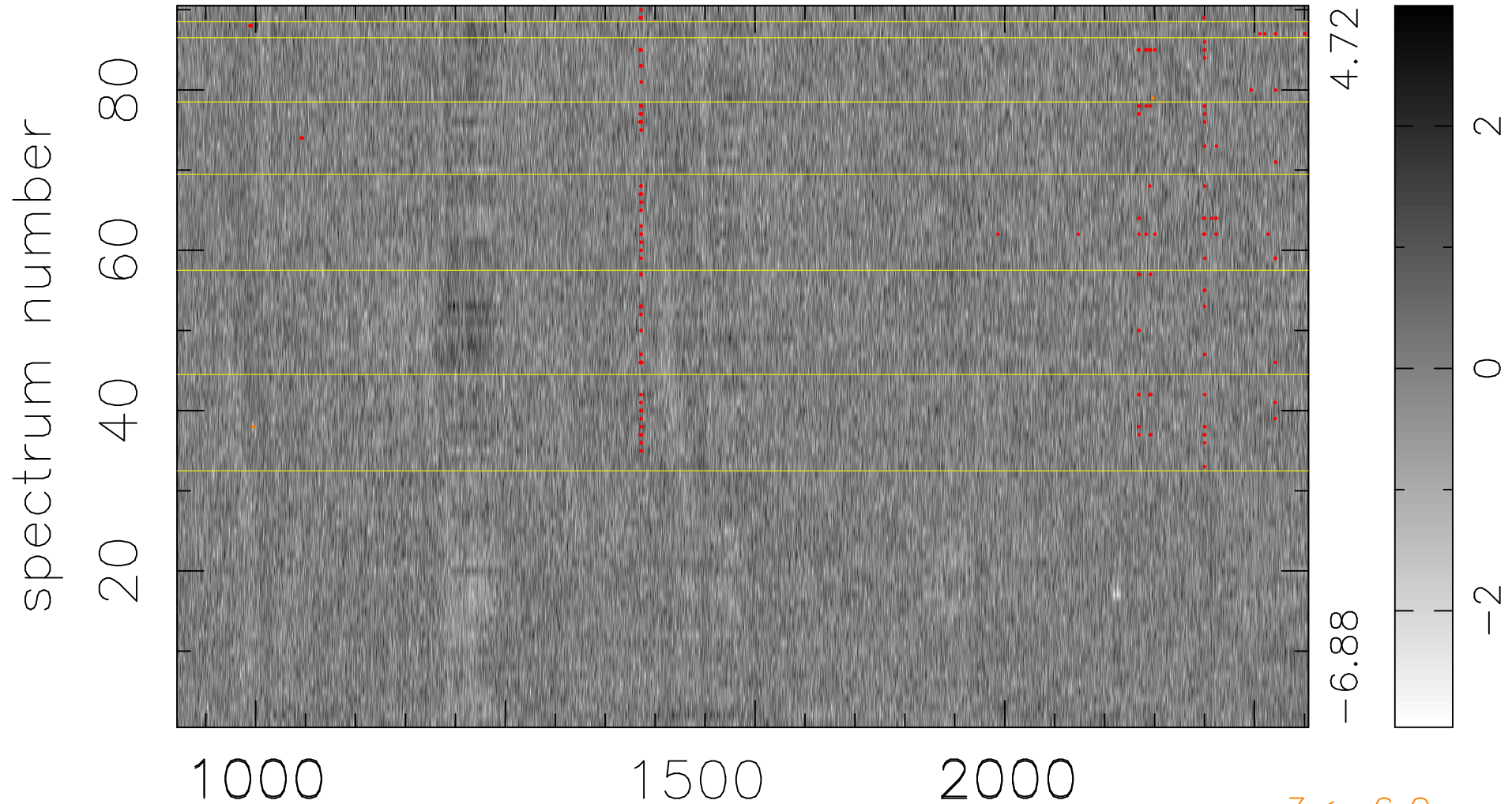


$$\chi(\lambda,t) = ( \text{Data} - \text{Model } AC_5 ) / \sigma \chi$$

$$\chi^2 / (407880 - 5105) = 0.943 \Rightarrow 1.005$$

4532x90



$3 < -6.0\sigma$

bad:198=0.049%  $\lambda$  (Å)  $z = 2.91003$