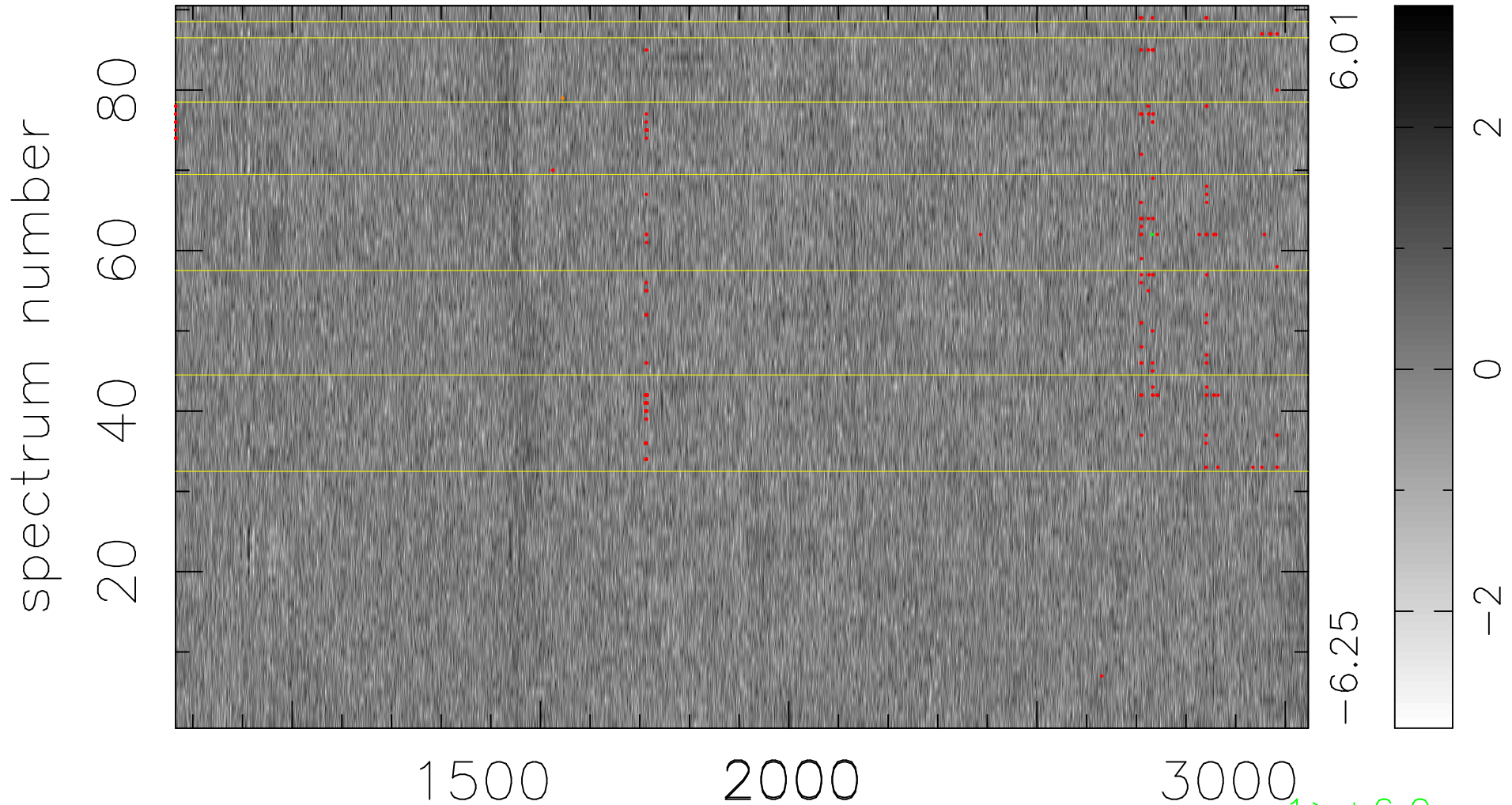


$$\chi(\lambda, t) = (\text{Data} - \text{Model AC}_5\text{B}_7\text{F}) / \sigma \chi$$

$$\chi^2 / (410670 - 5499) = 0.921 \Rightarrow 1.008$$

4563x90



6.01

-6.25

2

0

-2

1 > +6.0σ

1 < -6.0σ

bad:174=0.042% λ (Å) z = 2.19047