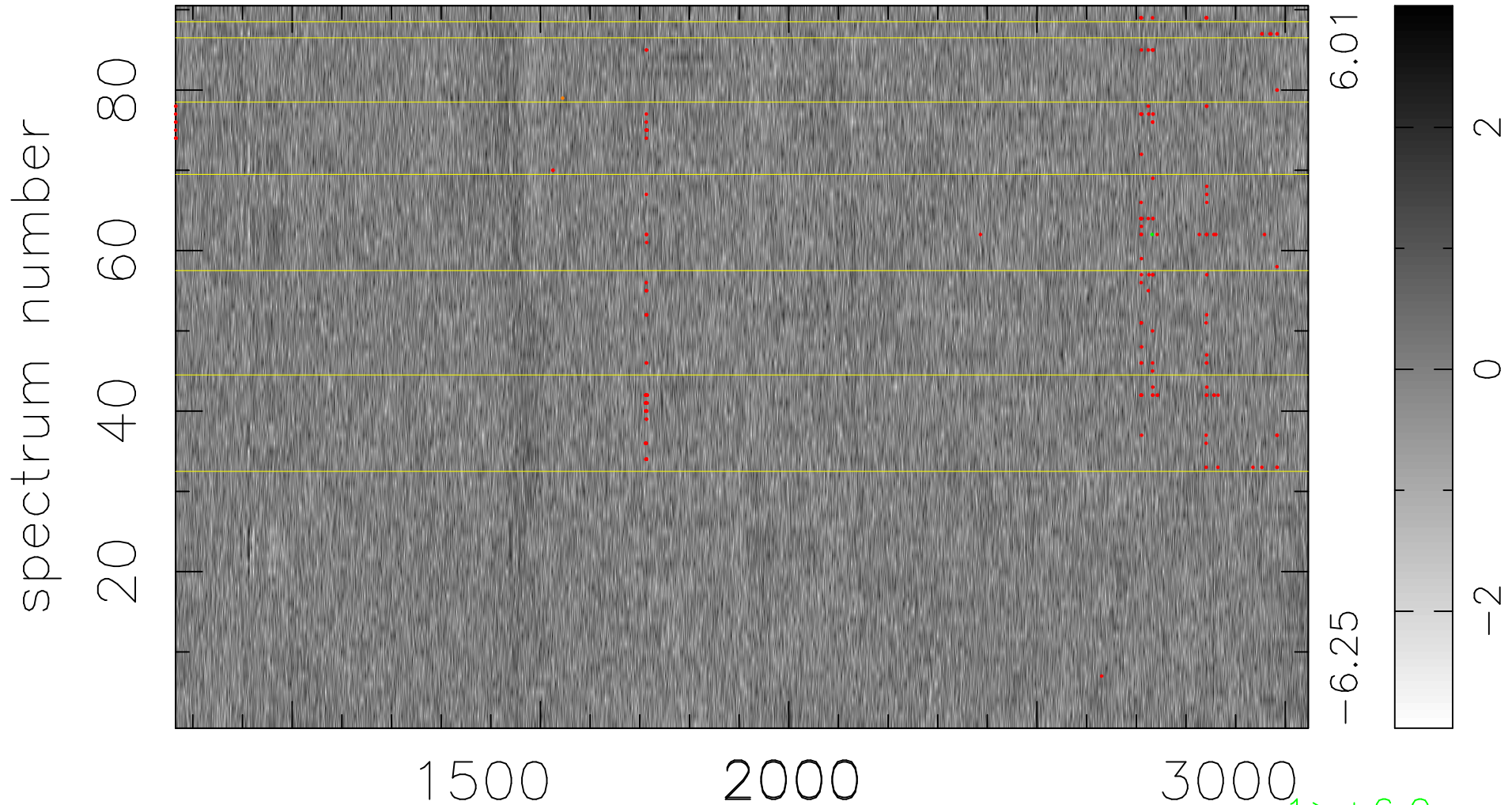


$$\chi(\lambda, t) = ( \text{Data} - \text{Model AC}_5\text{B}_7\text{F} ) / \sigma \chi$$

$$\chi^2 / (410670 - 5499) = 0.921 \Rightarrow 1.008$$

4563x90



bad:174=0.042%  $\lambda$  (Å)  $z = 2.19047$

1 > +6.0σ

1 < -6.0σ