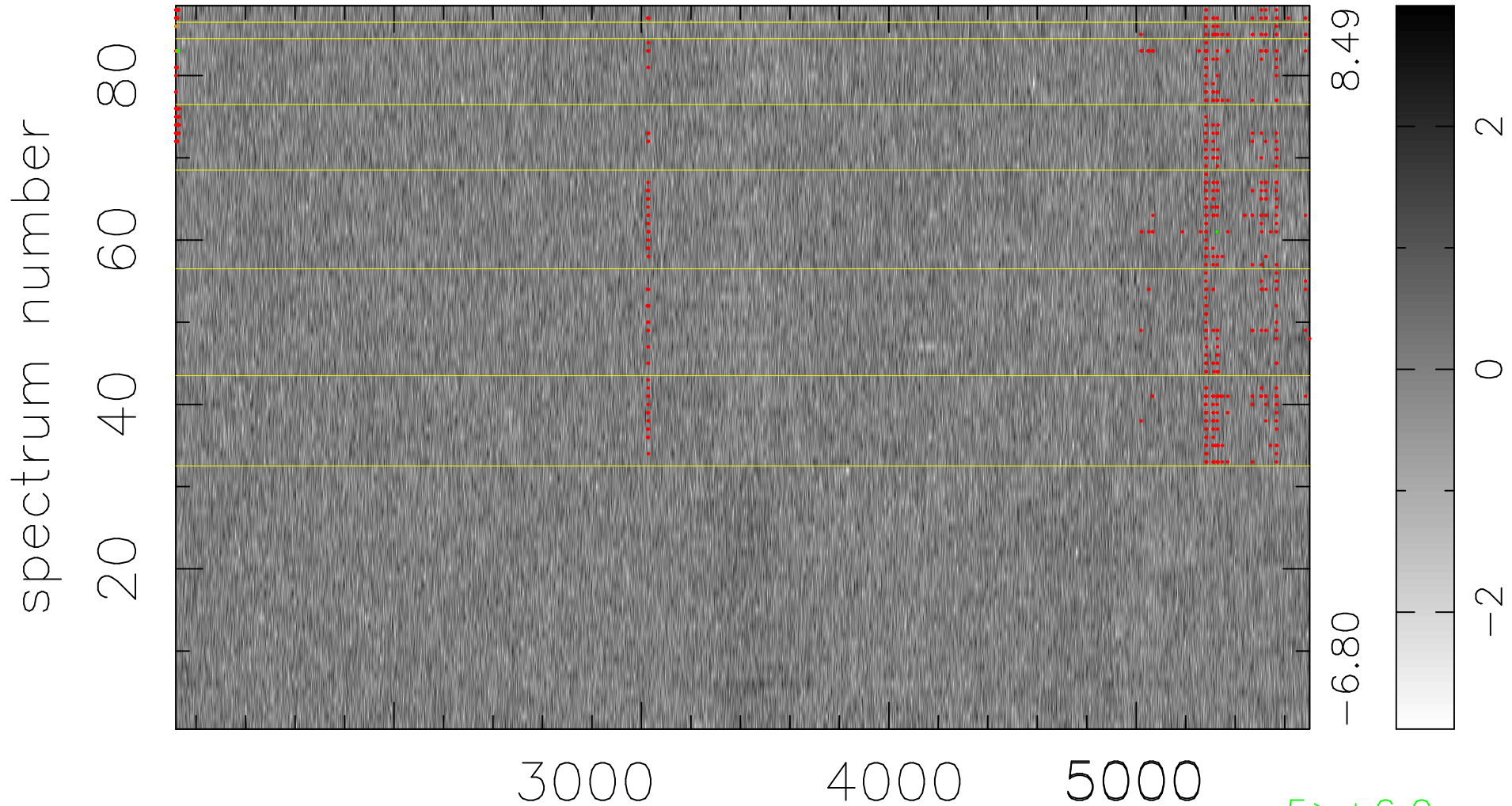


$$\chi(\lambda,t) = ( \text{Data} - \text{Model } AC_5 ) / \sigma \chi$$

$$\chi^2 / (403392 - 4865) = 0.909 \Rightarrow 1.006$$

4584x88



bad:595=0.15%

$\lambda$  (Å)  $z = 0.75313$

5 > +6.0 $\sigma$

4 < -6.0 $\sigma$