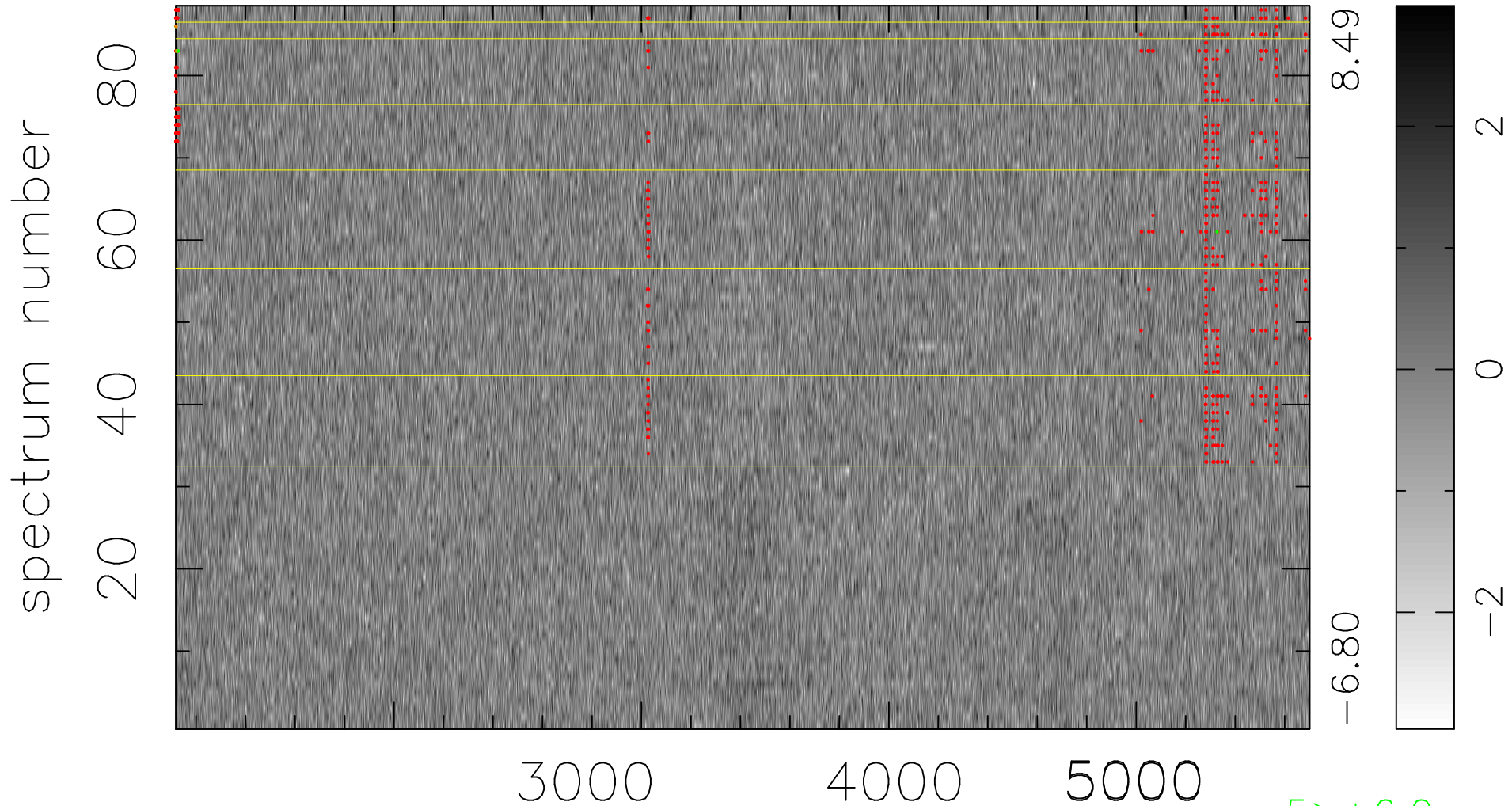


$$\chi(\lambda, t) = ( \text{Data} - \text{Model } \text{AC}_5\text{B}_3\text{F} ) / \sigma \chi$$

$$\chi^2 / (403392 - 5111) = 0.907 \Rightarrow 1.006$$

4584x88



bad:595=0.15%

$\lambda$  (Å)  $z = 0.75313$

5 > +6.0σ

4 < -6.0σ