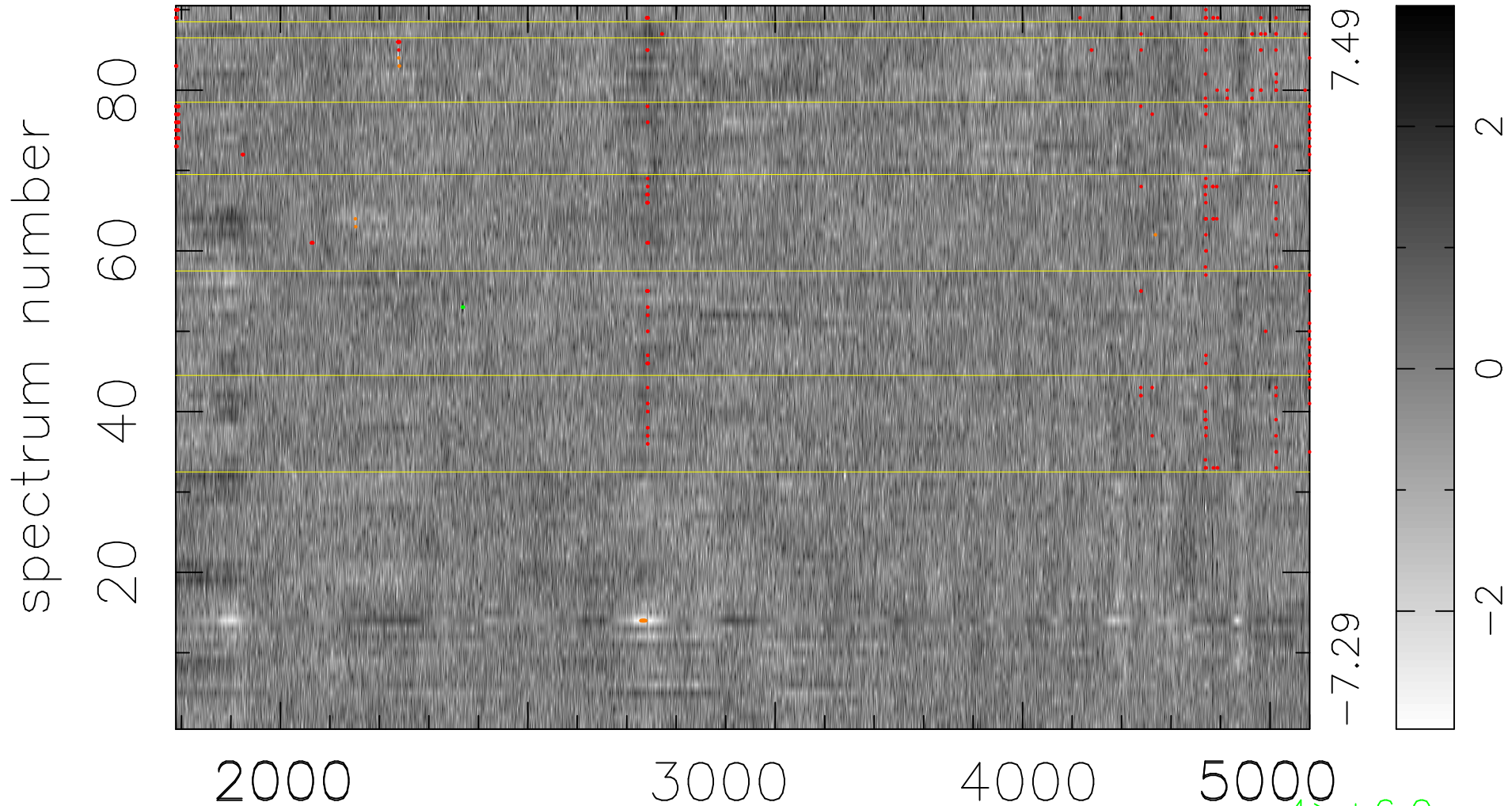


$$\chi(\lambda, t) = (\text{Data} - \text{Model AC}_5\text{F}) / \sigma \chi$$

$$\chi^2 / (412560 - 5067) = 1.142 \Rightarrow 1.007$$

4584x90



bad:325=0.079% λ (Å) $z = 0.98646$

4 > +6.0 σ
23 < -6.0 σ