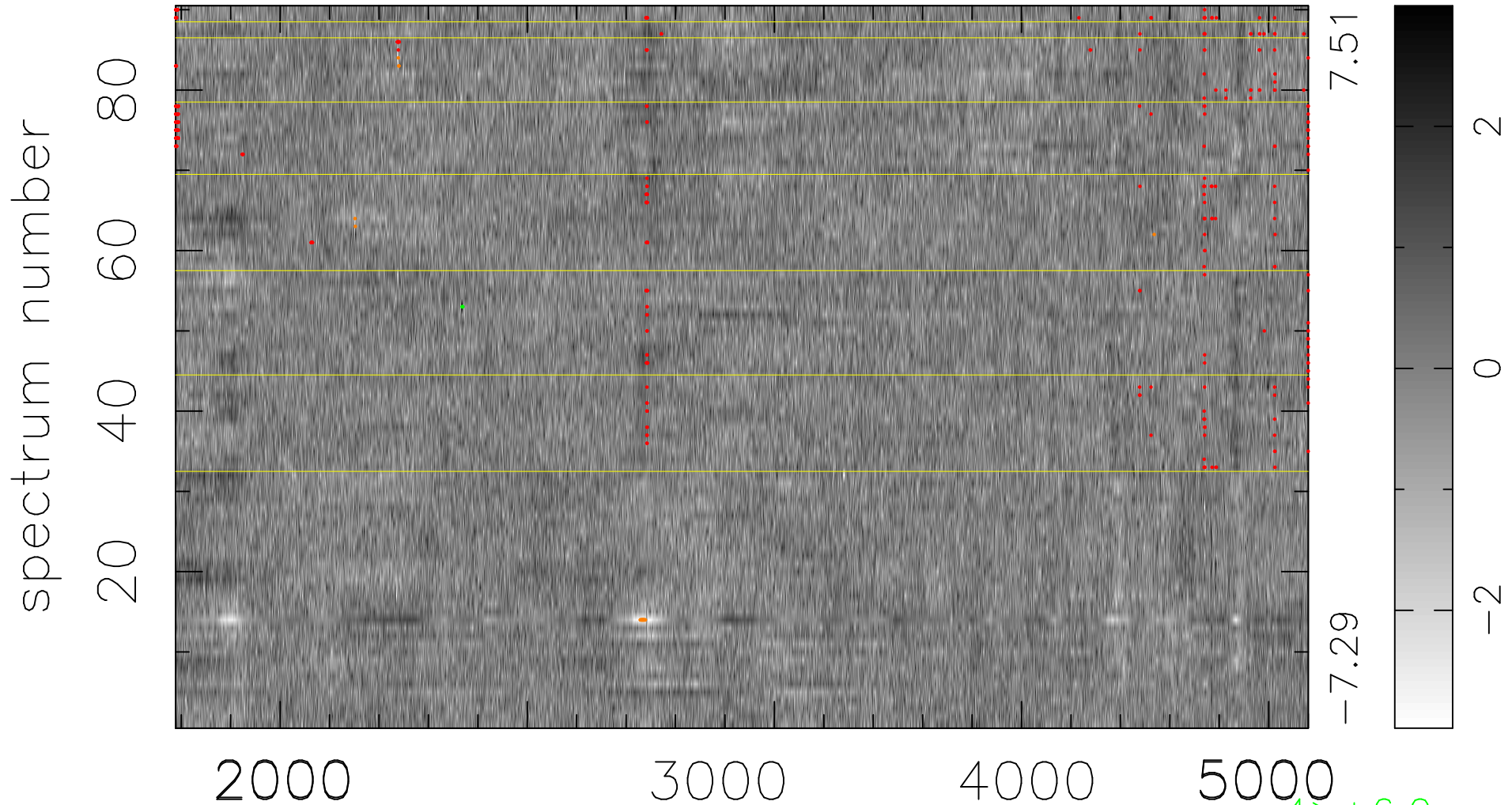


$$\chi(\lambda,t) = (\text{Data} - \text{Model } AC_5) / \sigma \chi$$

$$\chi^2 / (412560 - 4977) = 1.165 \Rightarrow 1.007$$

4584x90



7.51

-7.29

2000

3000

4000

5000

4 > +6.0σ

24 < -6.0σ

bad:325=0.079% λ (Å) z = 0.98646