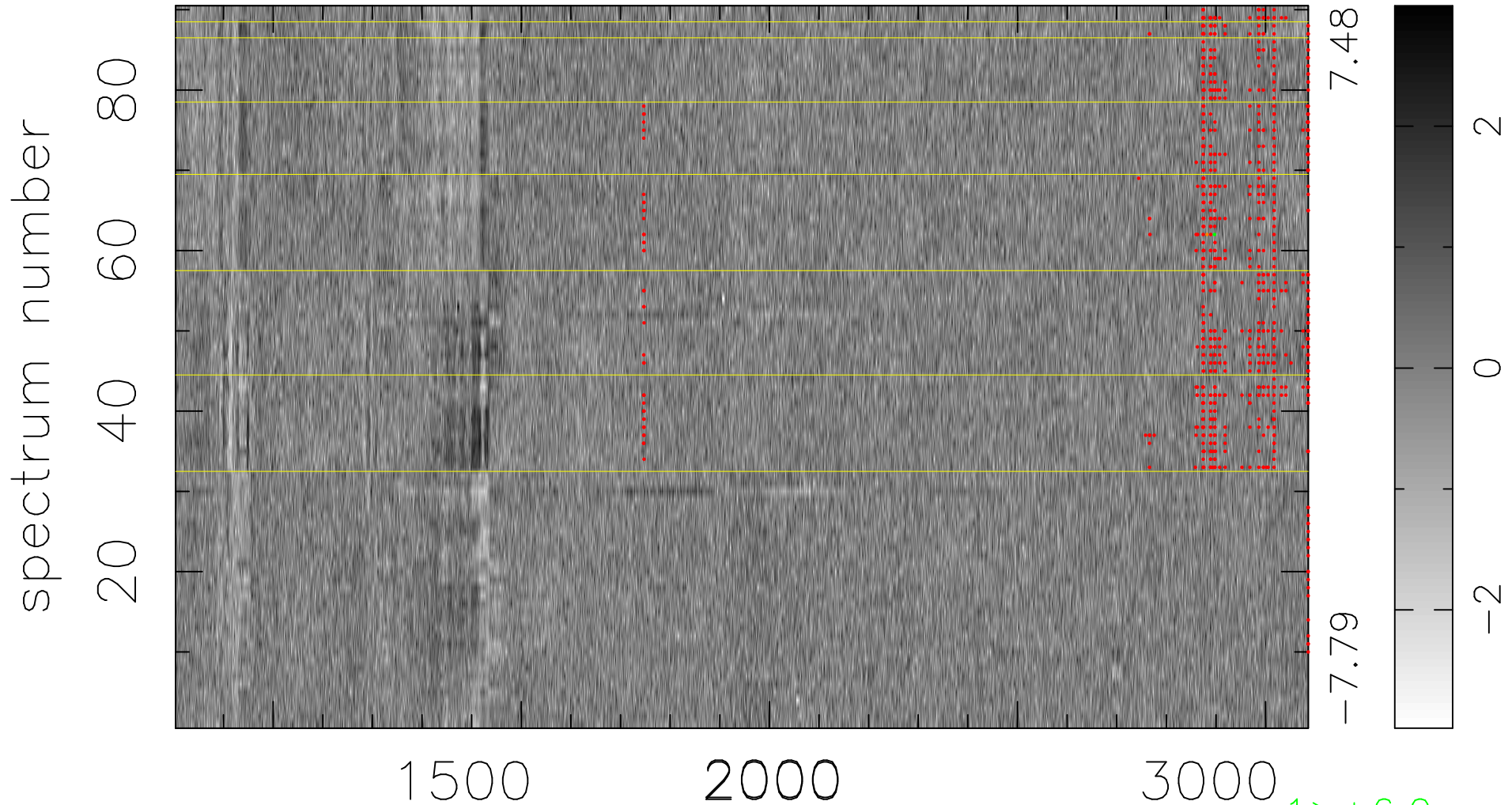


$$\chi(\lambda, t) = ( \text{Data} - \text{Model } \text{AC}_5\text{B}_7\text{F} ) / \sigma \chi$$

$$\chi^2 / (410940 - 5419) = 0.955 \Rightarrow 1.009$$

4566x90



bad:760=0.18%

$\lambda$  (Å)  $z = 2.14134$

$1 > +6.0\sigma$

$1 < -6.0\sigma$