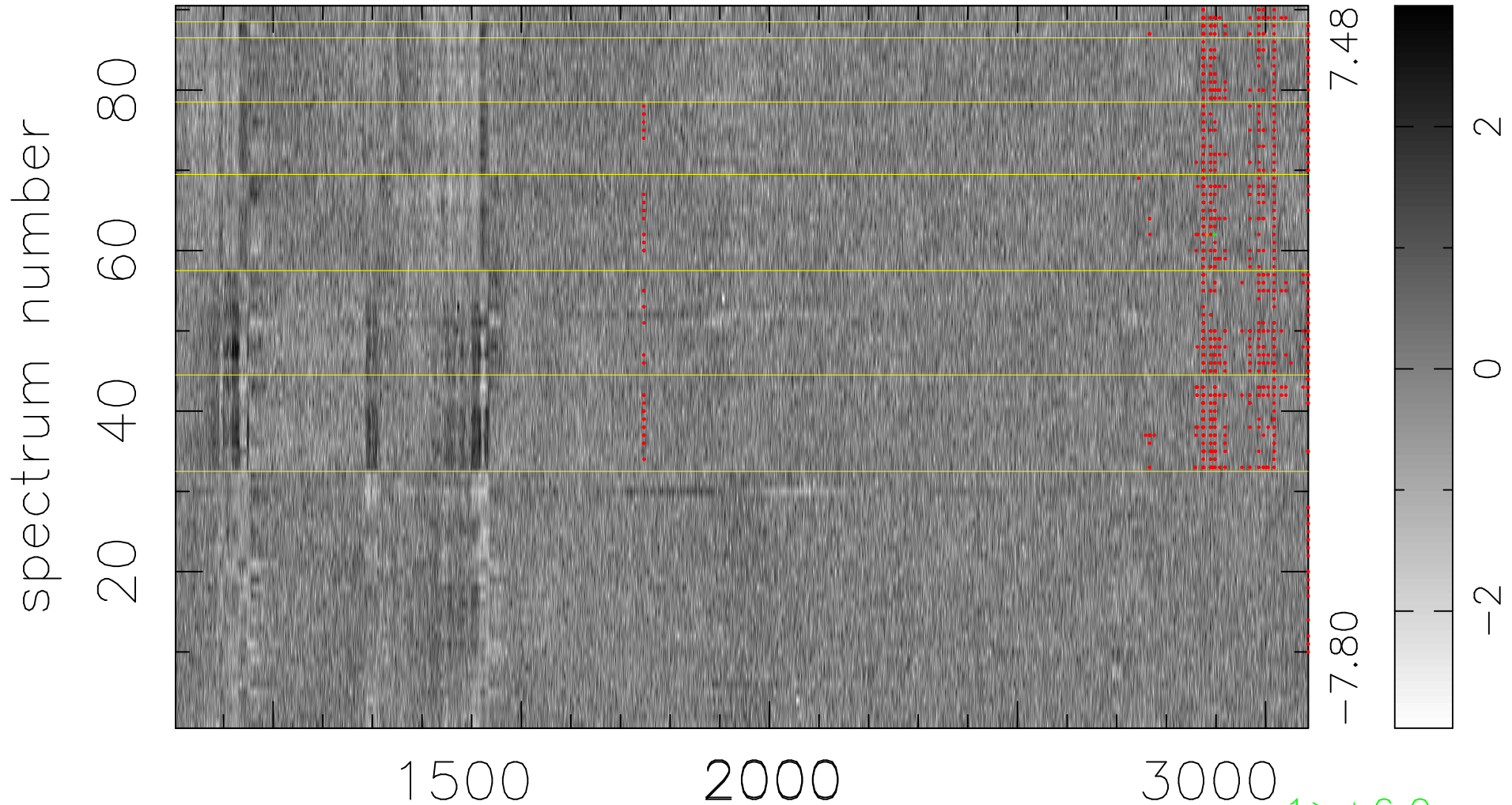


$$\chi(\lambda,t) = ( \text{Data} - \text{Model } AC_5 ) / \sigma \chi$$

$$\chi^2 / (410940 - 5237) = 0.980 \Rightarrow 1.008$$

4566x90



7.48

-7.80

2

0

-2

1 > +6.0σ

1 < -6.0σ

bad:760=0.18%

λ (Å) z = 2.14134