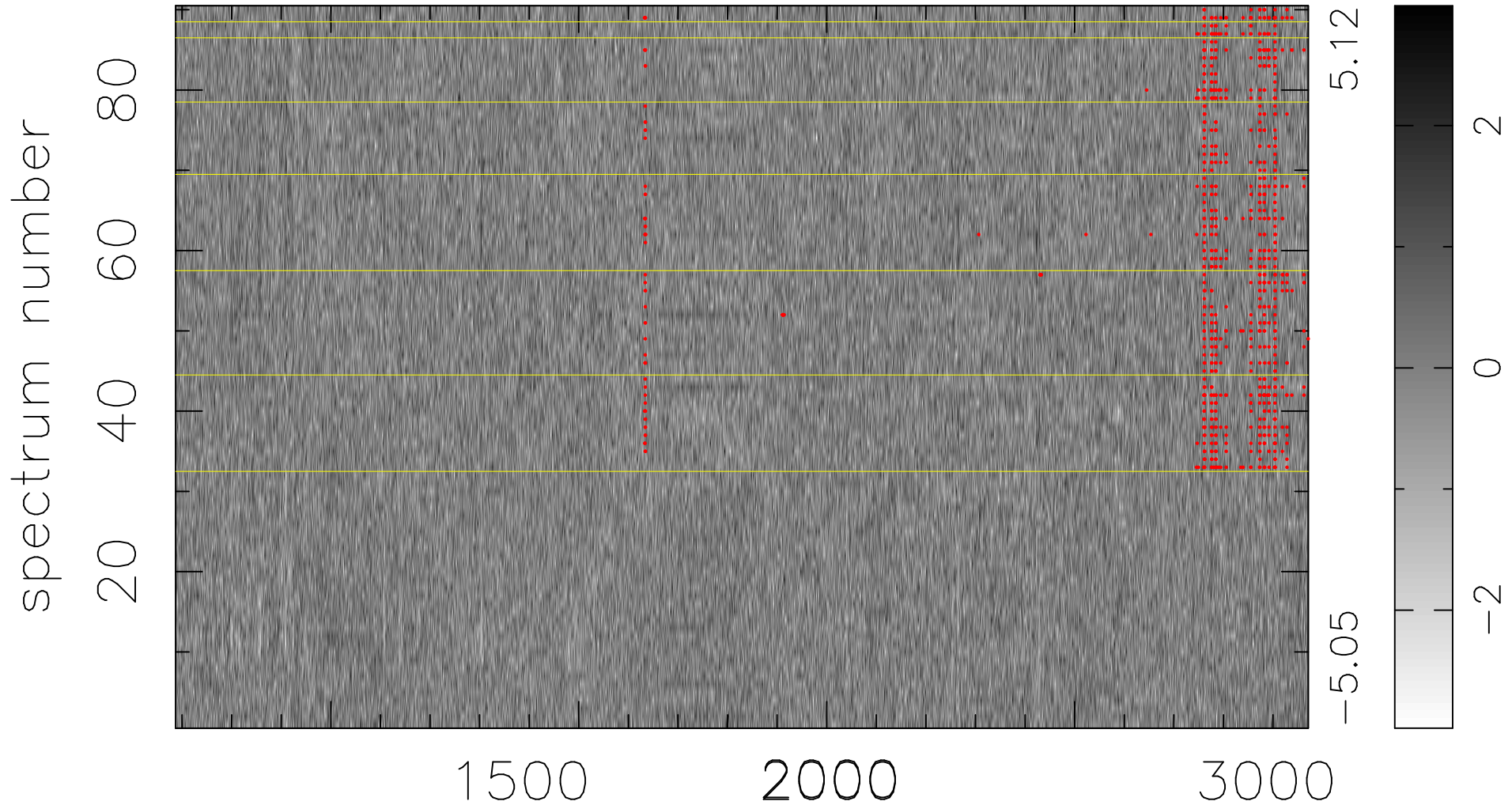


$$\chi(\lambda, t) = ( \text{Data} - \text{Model } \text{AC}_5\text{B}_7\text{F} ) / \sigma \chi$$

$$\chi^2 / (411210 - 5512) = 0.914 \Rightarrow 1.008$$

4569 × 90



bad:765=0.19%     $\lambda$  (Å)     $z = 2.30907$