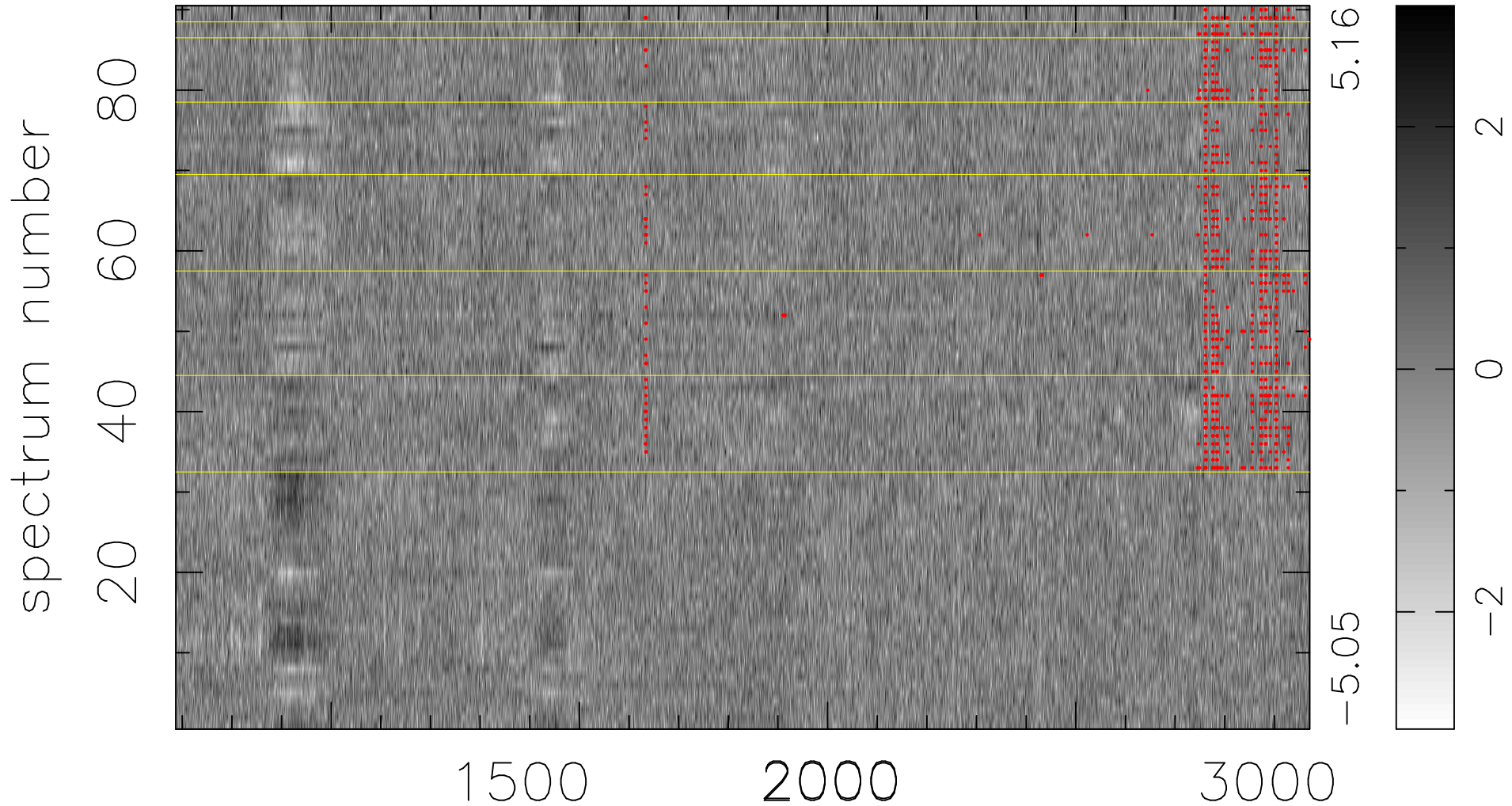


$$\chi(\lambda, t) = ( \text{Data} - \text{Model AC}_5\text{F} ) / \sigma \chi$$

$$\chi^2 / (411210 - 5327) = 0.946 \Rightarrow 1.007$$

4569 × 90



bad:765=0.19%

$\lambda$  (Å)  $z = 2.30907$