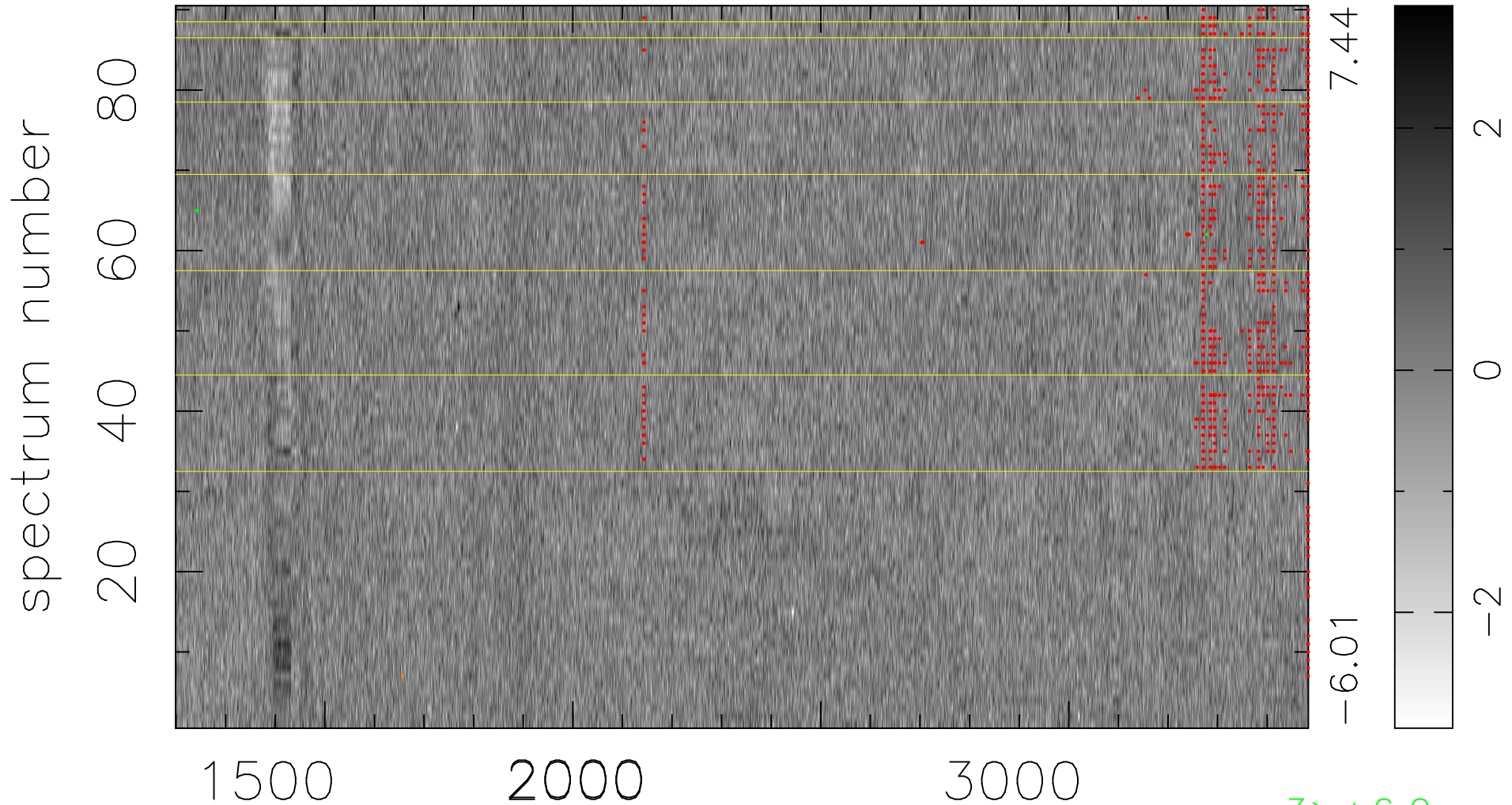


$$\chi(\lambda, t) = (\text{Data} - \text{Model } \text{AC}_5\text{B}_5\text{F}) / \sigma \chi$$

$$\chi^2 / (411120 - 5257) = 0.901 \Rightarrow 1.008$$

4568x90



bad:848=0.21%

λ (Å) $z = 1.61729$

3 > +6.0 σ

1 < -6.0 σ