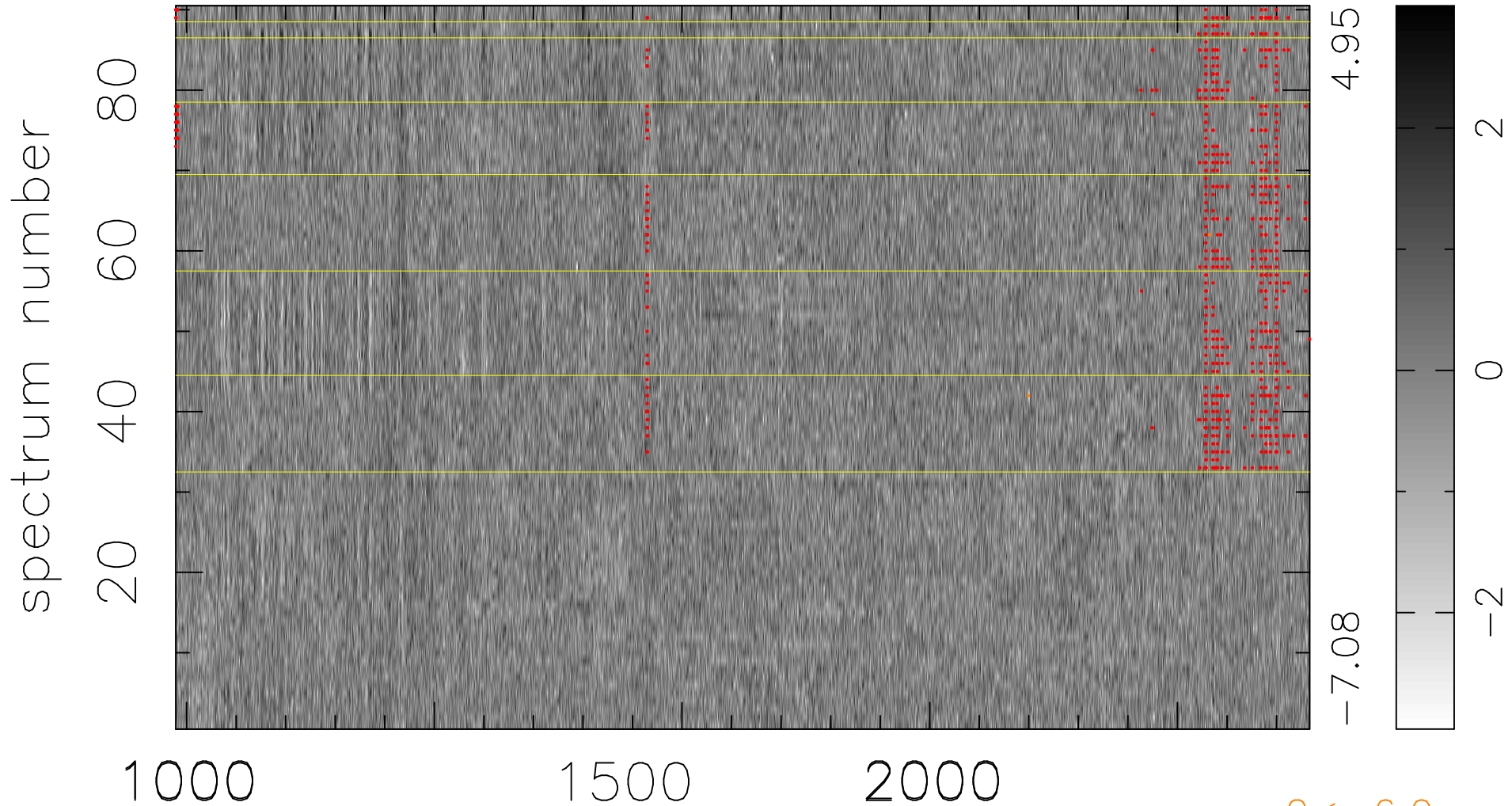


$$\chi(\lambda, t) = ( \text{Data} - \text{Model } \text{AC}_5\text{B}_7\text{F} ) / \sigma \chi$$

$$\chi^2 / (412020 - 5461) = 0.968 \Rightarrow 1.009$$

4578x90



$2 < -6.0\sigma$

bad:719=0.17%

$\lambda$  (Å)  $z = 2.63542$