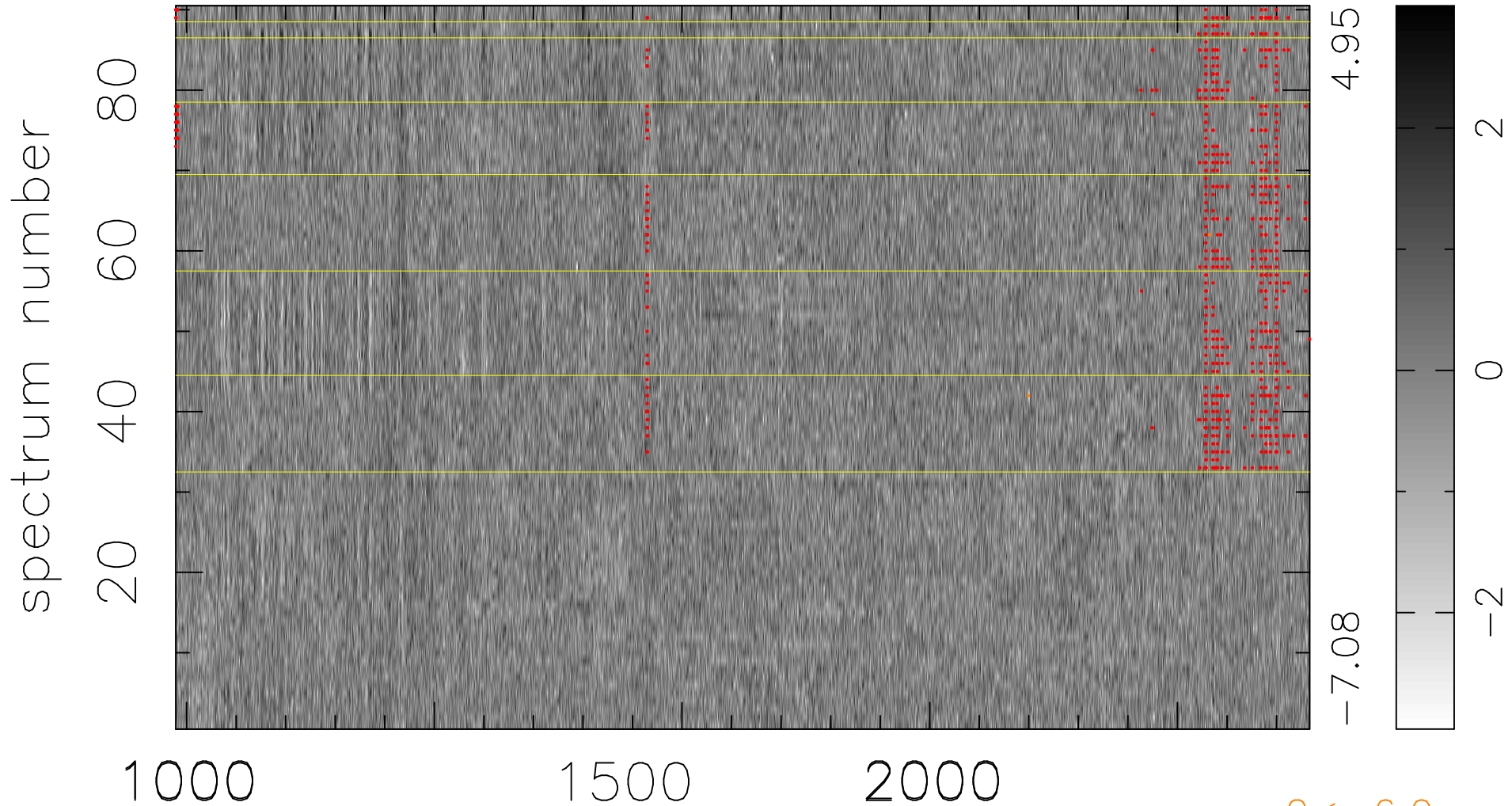


$$\chi(\lambda, t) = (\text{Data} - \text{Model } \text{AC}_5\text{B}_7\text{F}) / \sigma \chi$$

$$\chi^2 / (412020 - 5461) = 0.968 \Rightarrow 1.009$$

4578x90



bad:719=0.17%

λ (Å) $z = 2.63542$

$2 < -6.0\sigma$