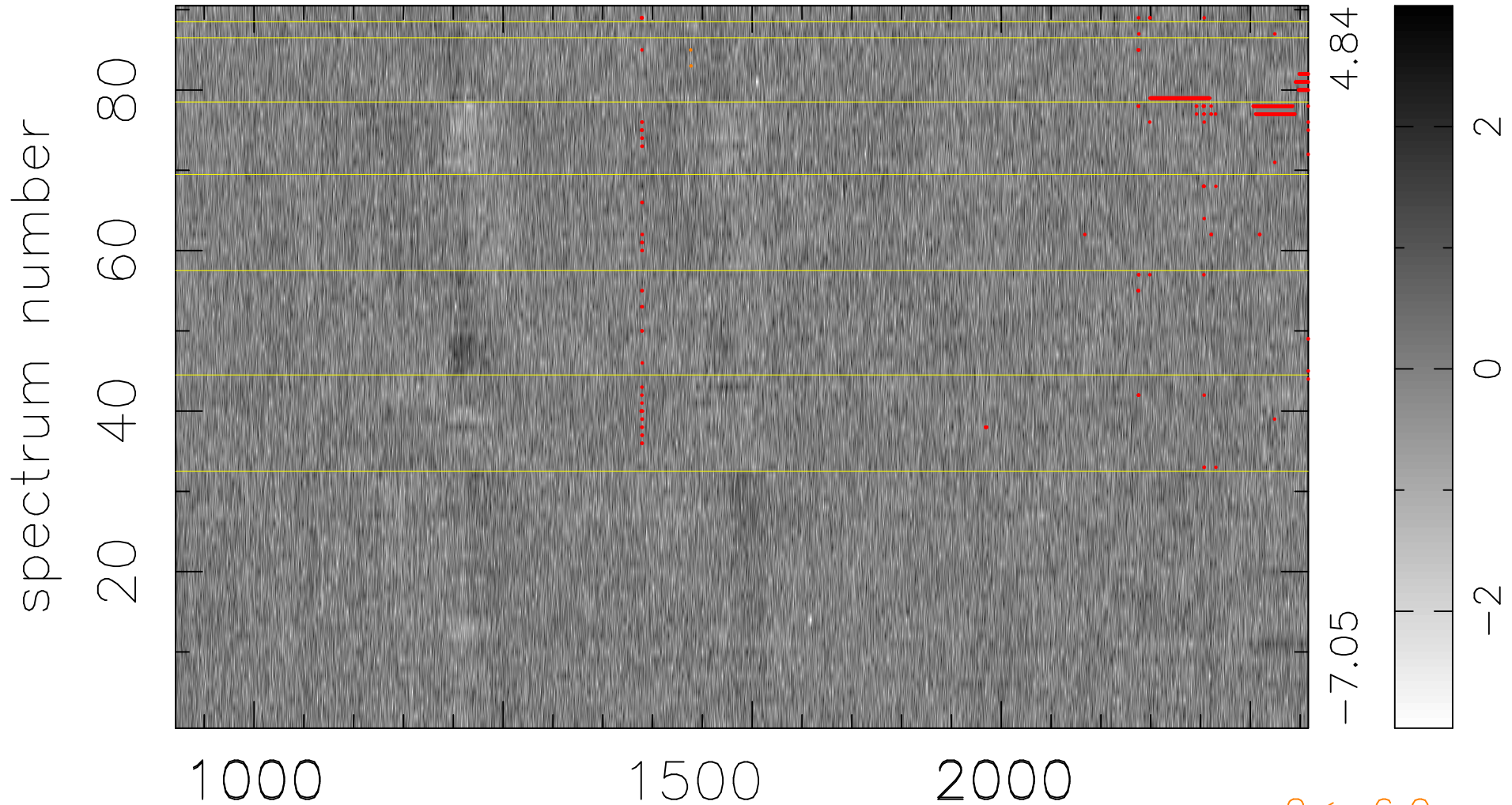


$$\chi(\lambda,t) = ( \text{Data} - \text{Model } AC_5 ) / \sigma \chi$$

$$\chi^2 / (409320 - 5114) = 0.892 \Rightarrow 1.007$$

4548x90



bad:798=0.19%

$\lambda$  (Å)  $z = 2.89740$

$2 < -6.0\sigma$