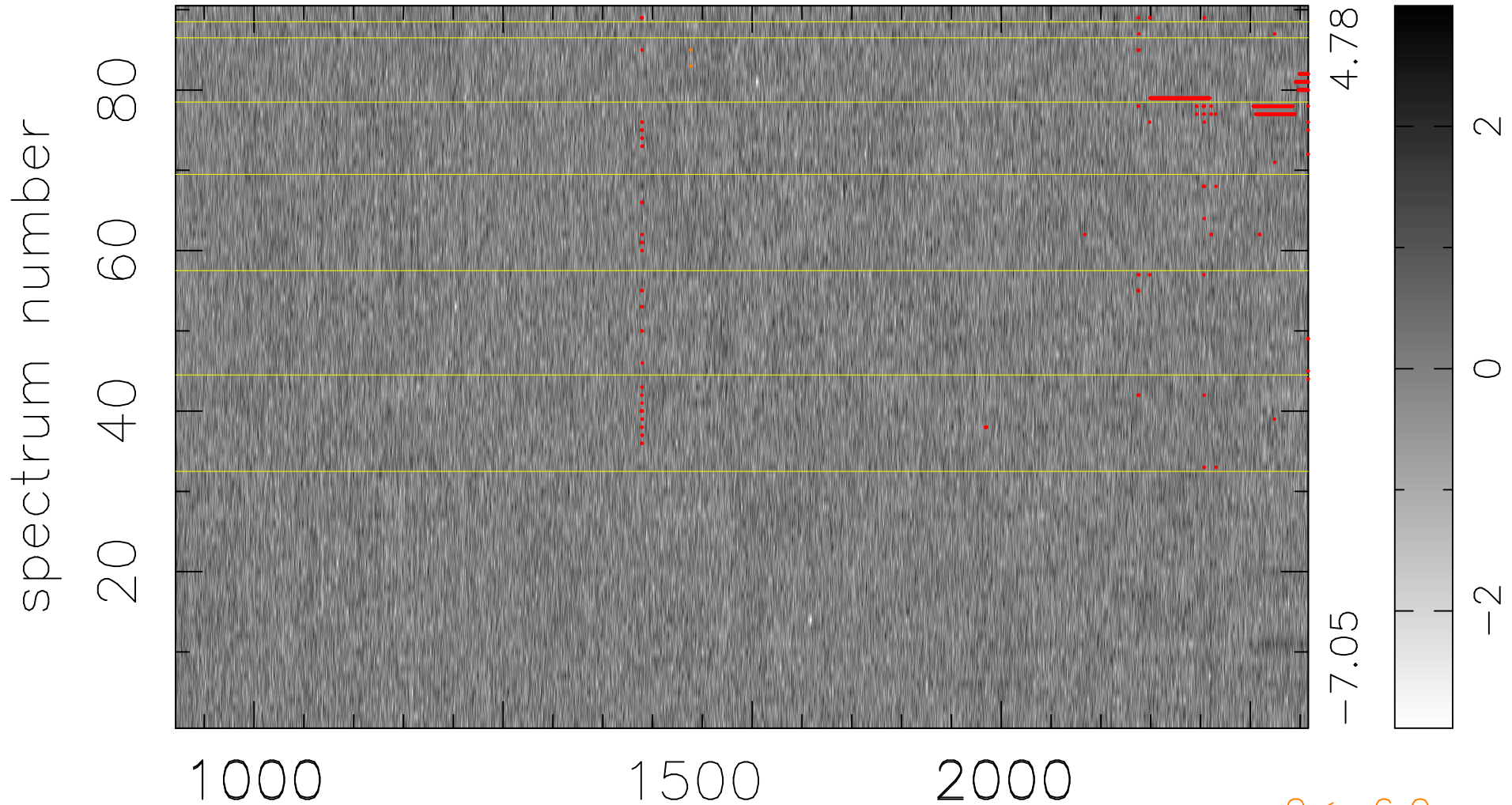


$$\chi(\lambda, t) = ( \text{Data} - \text{Model } \text{AC}_5\text{B}_6\text{F} ) / \sigma \chi$$

$$\chi^2 / (409320 - 5375) = 0.885 \Rightarrow 1.008$$

4548x90



bad:798=0.19%

$\lambda$  (Å)  $z = 2.89740$

$2 < -6.0\sigma$