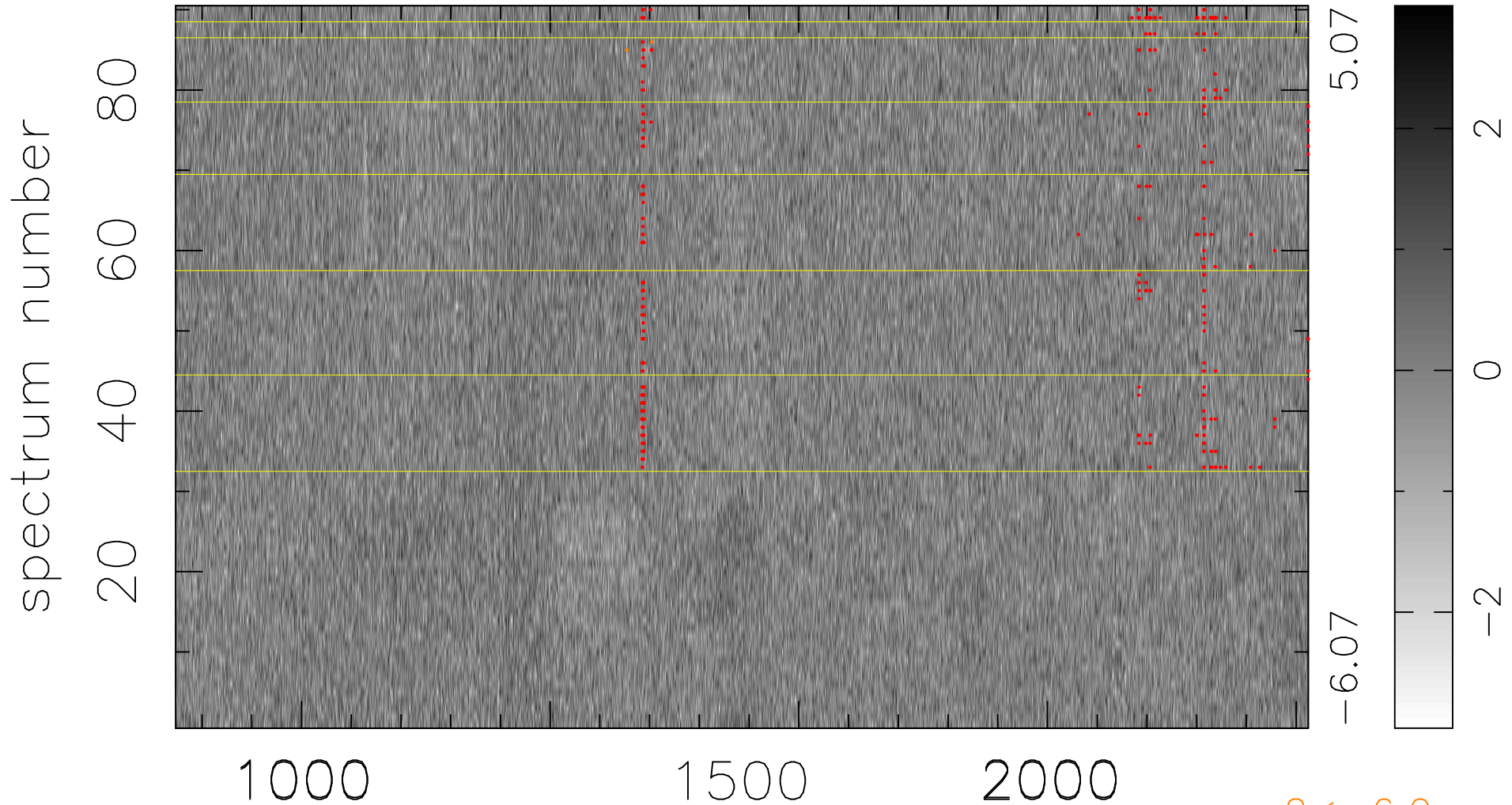


$$\chi(\lambda, t) = ( \text{Data} - \text{Model } \text{AC}_5\text{B}_6\text{F} ) / \sigma \chi$$

$$\chi^2 / (410040 - 5403) = 0.986 \Rightarrow 1.009$$

4556x90



bad:372=0.091%  $\lambda$  (Å)  $z = 3.06574$

$2 < -6.0\sigma$