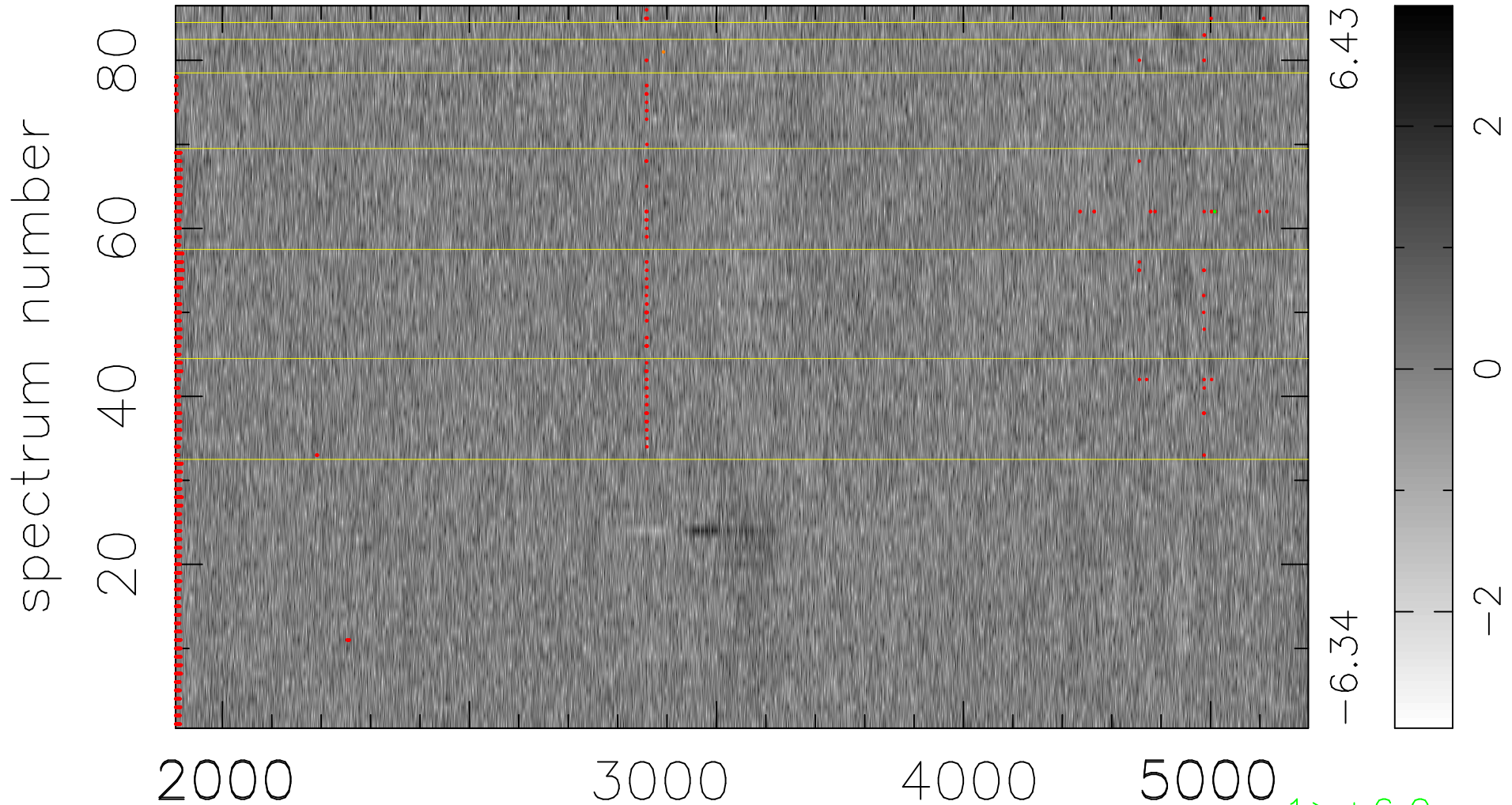


$$\chi(\lambda, t) = ( \text{Data} - \text{Model } \text{AC}_5\text{B}_3\text{F} ) / \sigma \chi$$

$$\chi^2 / (394396 - 5102) = 0.938 \Rightarrow 1.007$$

4586x86



bad:1614=0.41%  $\lambda$  (Å)  $z = 0.88248$

$1 > +6.0\sigma$   
 $1 < -6.0\sigma$