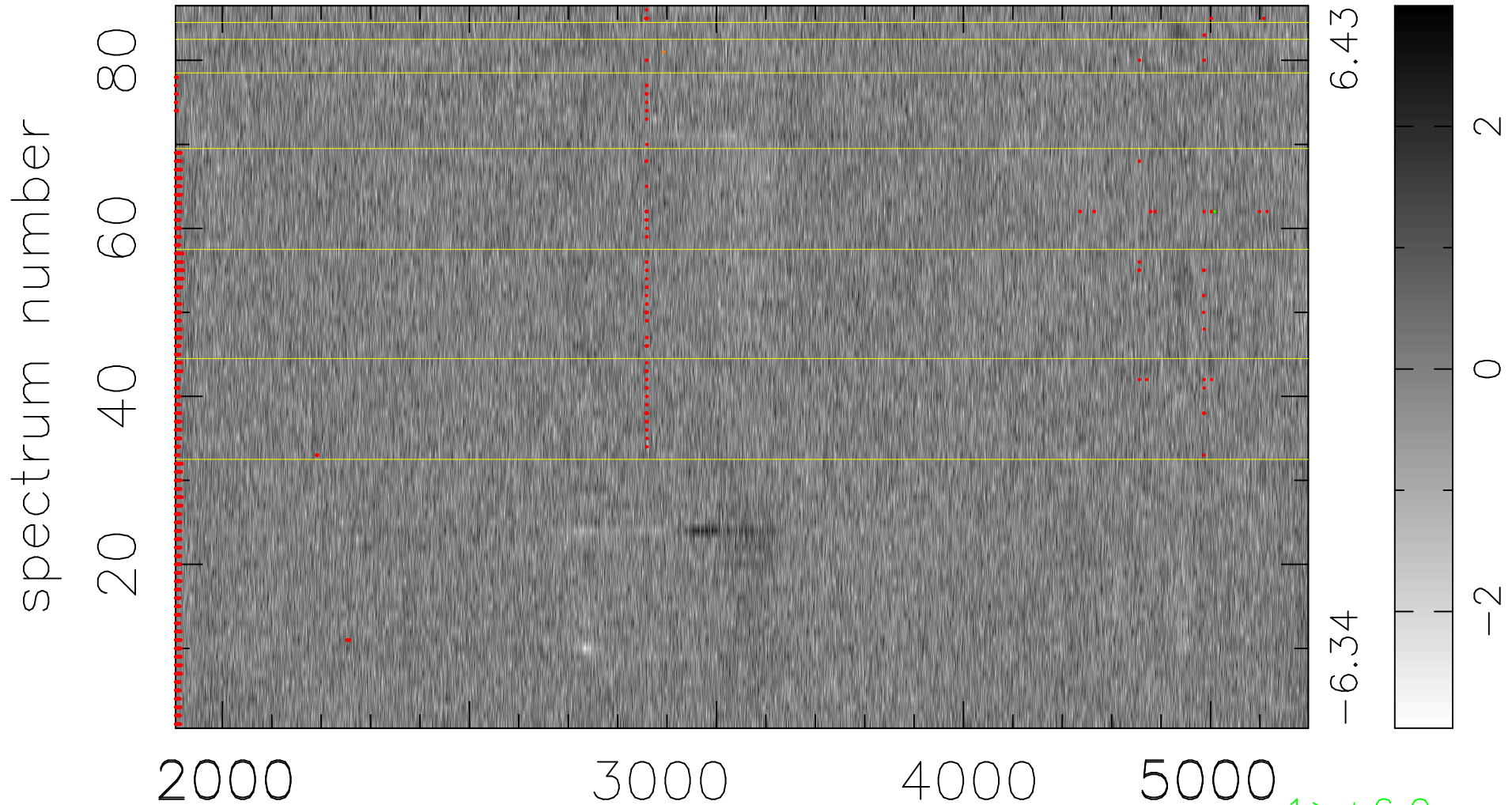


$$\chi(\lambda, t) = ( \text{Data} - \text{Model } AC_5 ) / \sigma \chi$$

$$\chi^2 / (394396 - 4855) = 0.940 \Rightarrow 1.007$$

4586x86



bad:1614=0.41%  $\lambda$  (Å)  $z = 0.88248$

1 > +6.0 $\sigma$

1 < -6.0 $\sigma$