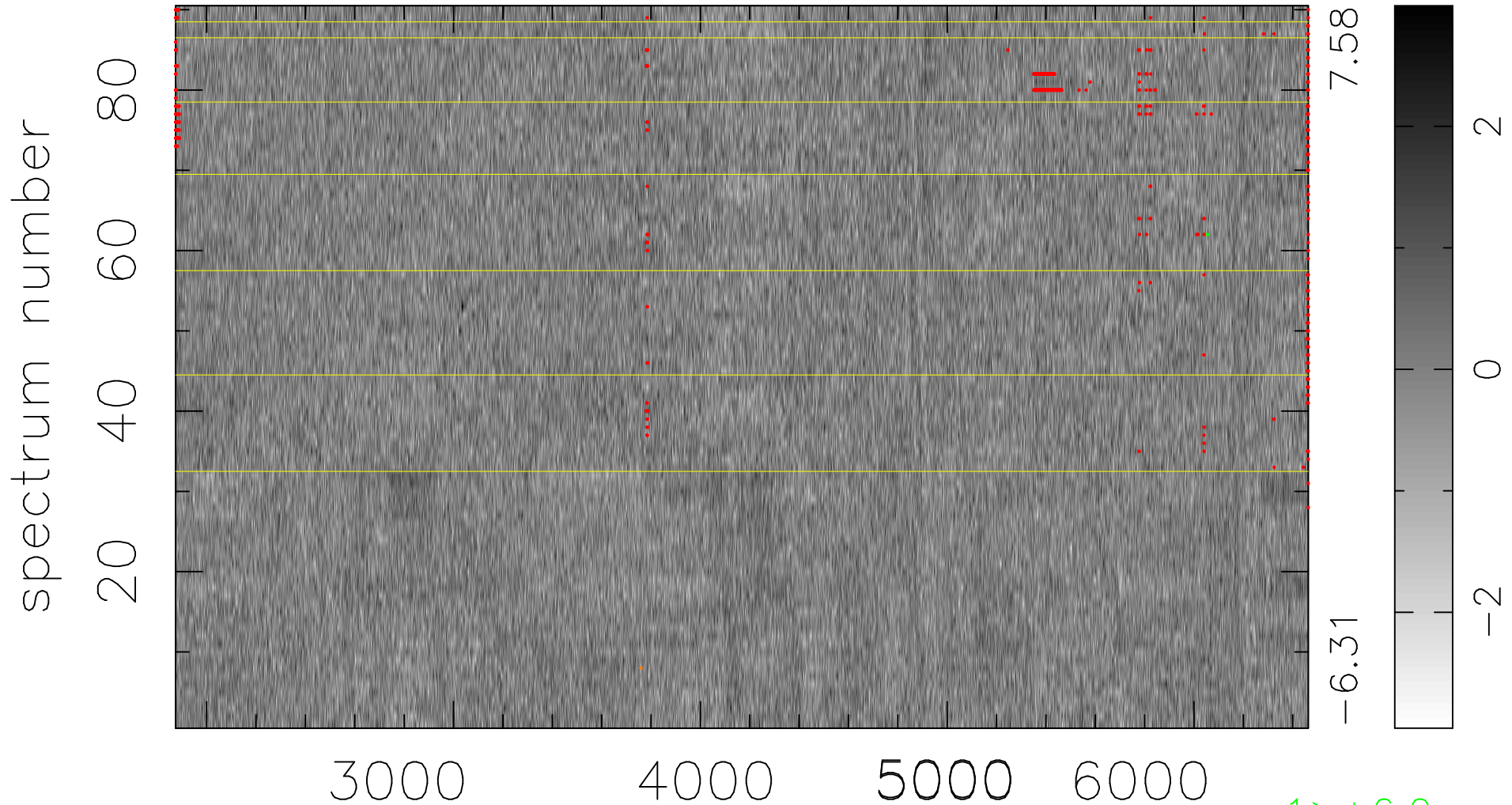


$$\chi(\lambda, t) = (\text{Data} - \text{Model } \text{AC}_5\text{B}_4\text{F}) / \sigma \chi$$

$$\chi^2 / (413100 - 5213) = 0.902 \Rightarrow 1.004$$

4590x90



bad:608=0.15%

λ (Å) $z = 0.47263$

1 > +6.0 σ

1 < -6.0 σ