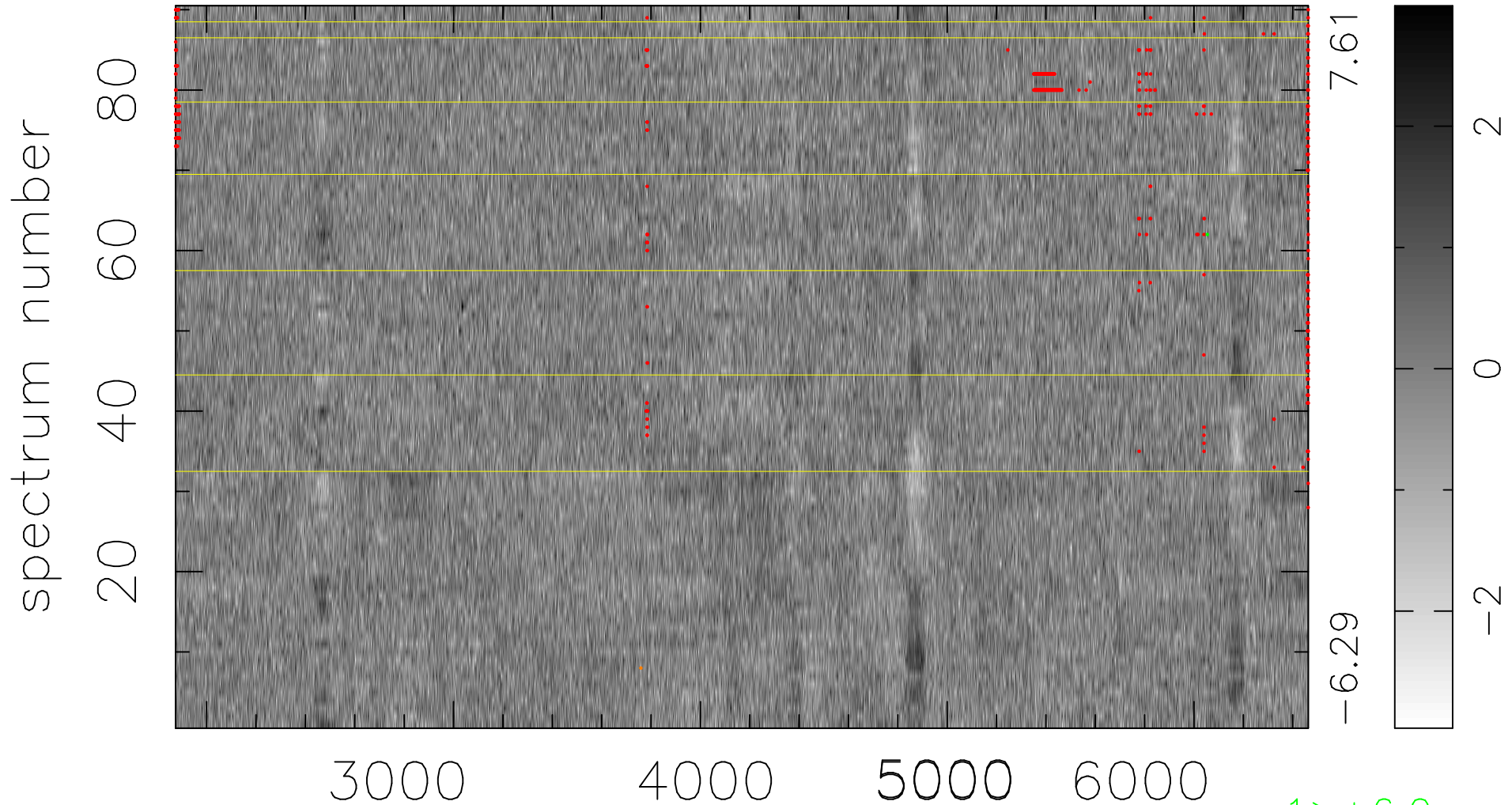


$$\chi(\lambda, t) = (\text{Data} - \text{Model AC}_5\text{F}) / \sigma \chi$$

$$\chi^2 / (413100 - 5072) = 0.923 \Rightarrow 1.006$$

4590x90



bad:608=0.15%

λ (Å) $z = 0.47263$

1 > +6.0 σ

1 < -6.0 σ