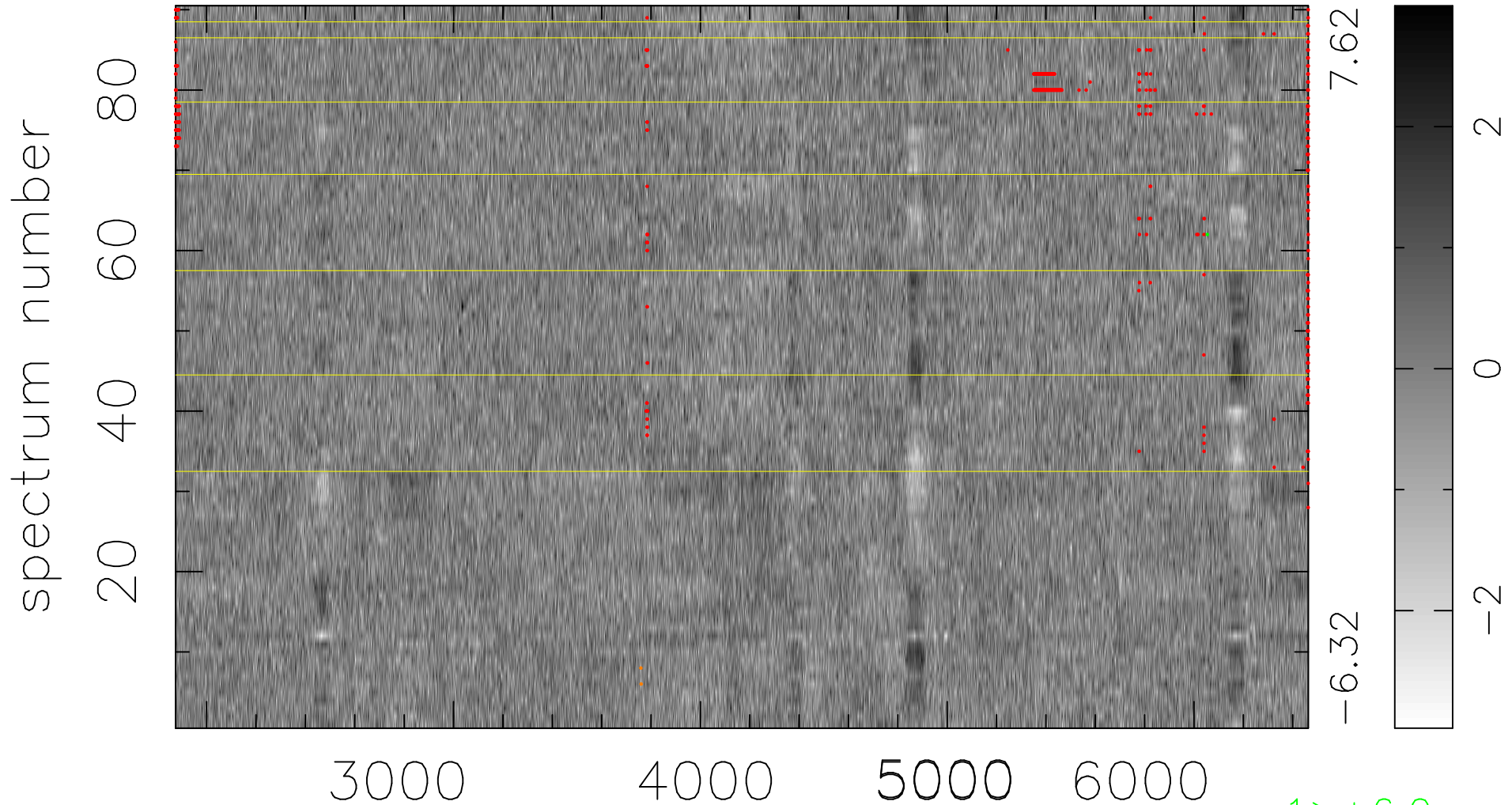


$$\chi(\lambda, t) = (\text{Data} - \text{Model } AC_5) / \sigma \chi$$

$$\chi^2 / (413100 - 4982) = 0.944 \Rightarrow 1.008$$

4590x90



bad:608=0.15%

λ (Å) $z = 0.47263$

1 > +6.0σ

2 < -6.0σ