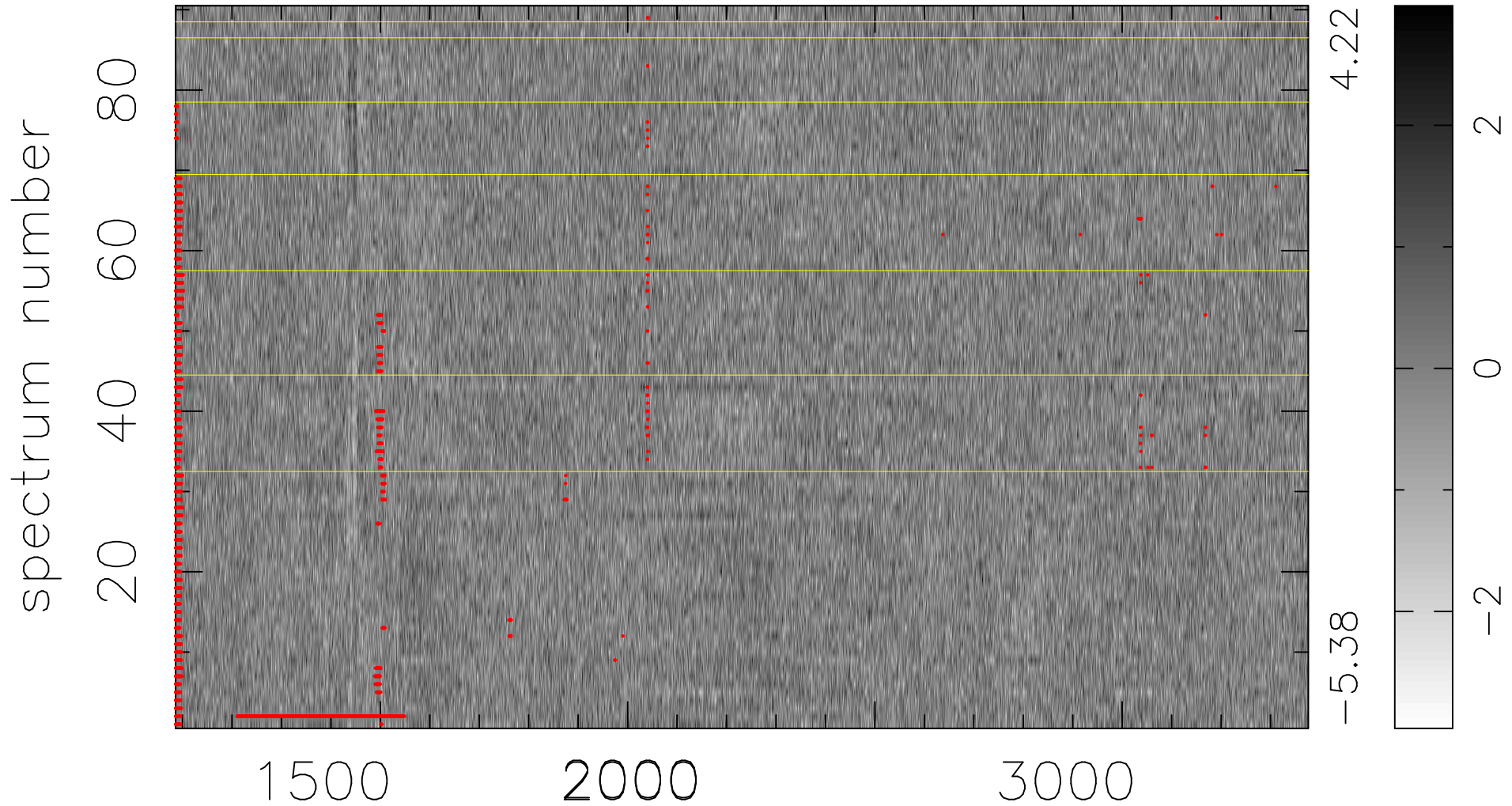


$$\chi(\lambda, t) = (\text{Data} - \text{Model } \text{AC}_5\text{B}_5\text{F}) / \sigma \chi$$

$$\chi^2 / (412290 - 5235) = 0.892 \Rightarrow 1.007$$

4581 × 90



bad:2759=0.67% λ (Å) $z = 1.74455$