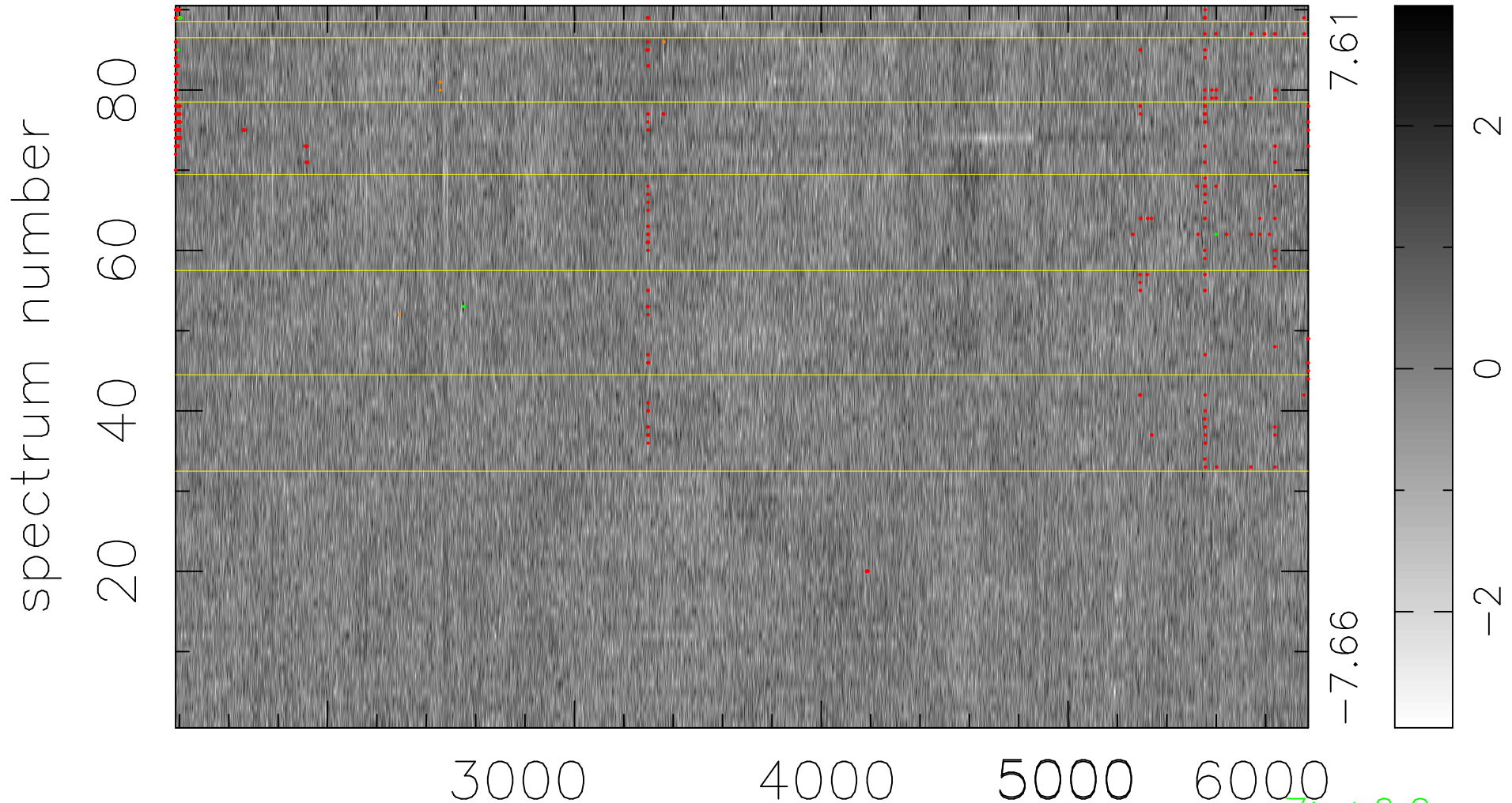


$$\chi(\lambda, t) = (\text{Data} - \text{Model } \text{AC}_5\text{B}_3\text{F}) / \sigma \chi$$

$$\chi^2 / (413010 - 5092) = 0.953 \Rightarrow 1.003$$

4589 × 90



bad:392=0.095% λ (Å) $z = 0.64718$

7 > +6.0σ

8 < -6.0σ