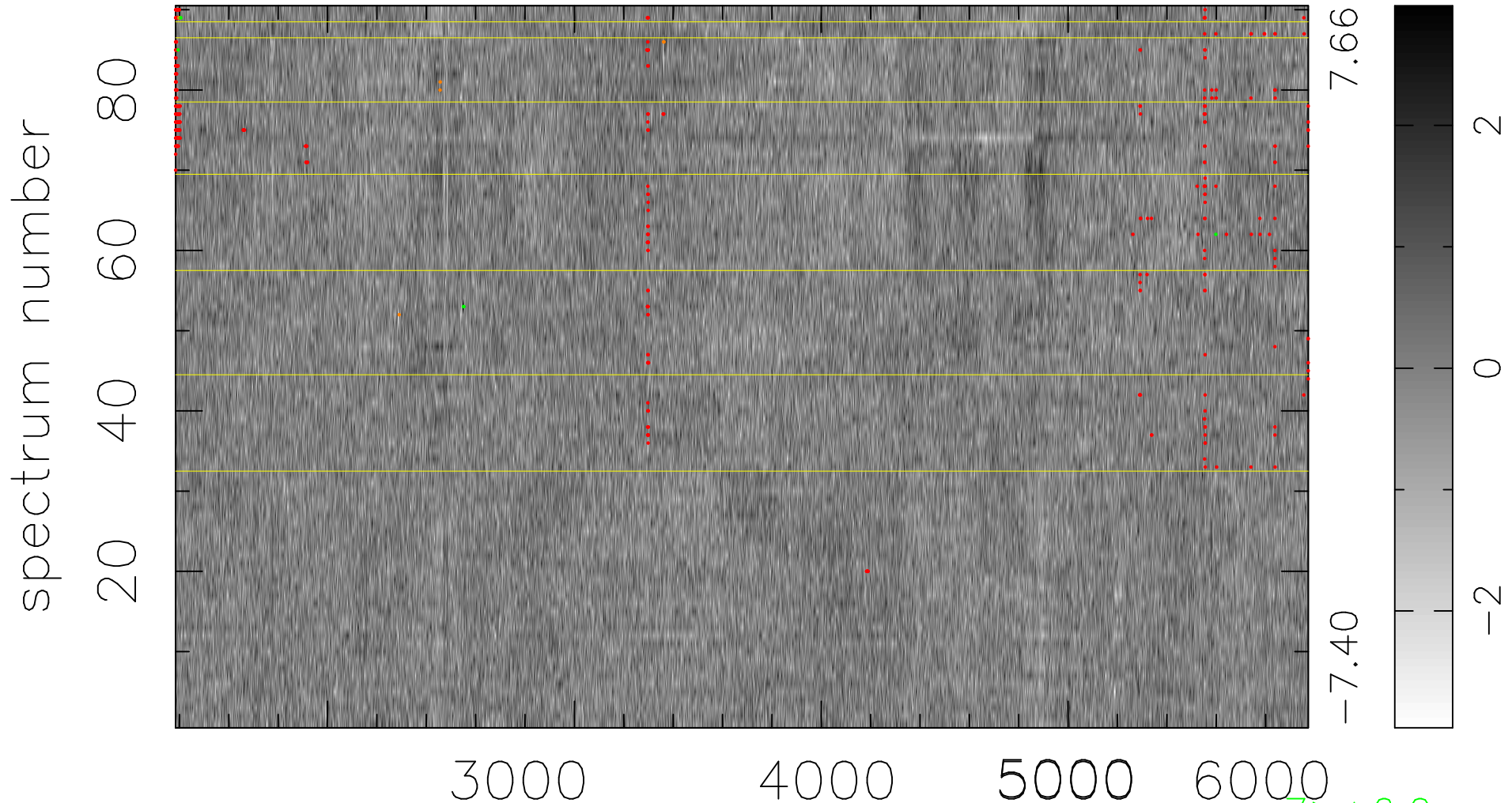


$$\chi(\lambda, t) = ( \text{Data} - \text{Model } AC_5 ) / \sigma \chi$$

$$\chi^2 / (413010 - 4874) = 0.959 \Rightarrow 1.004$$

4589 × 90



bad:392=0.095%  $\lambda$  (Å)  $z = 0.64718$

7 > +6.0σ

8 < -6.0σ