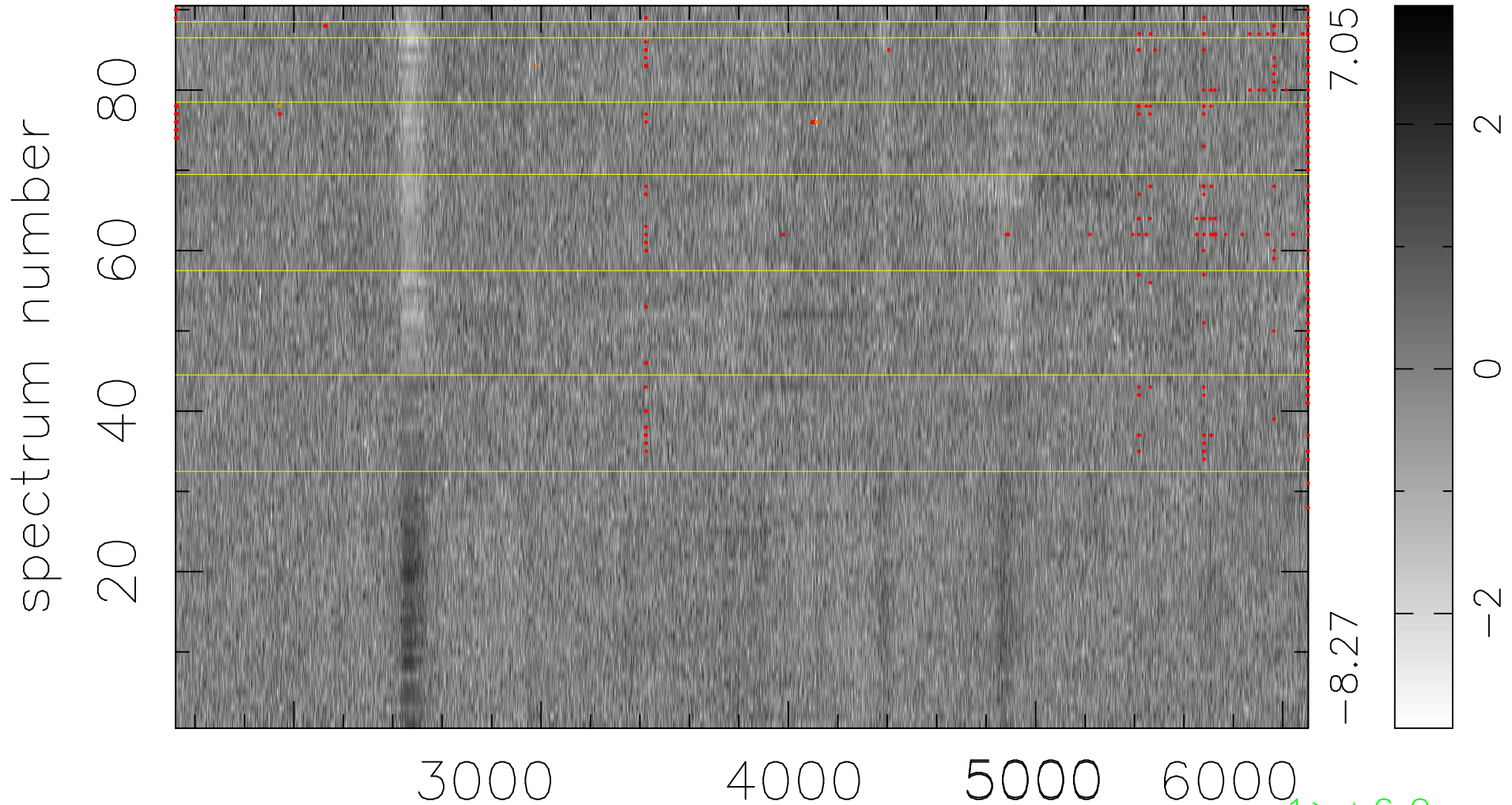


$$\chi(\lambda, t) = (\text{Data} - \text{Model AC}_5\text{F}) / \sigma \chi$$

$$\chi^2 / (412380 - 4969) = 1.002 \Rightarrow 0.997$$

4582x90



-8.27 7.05

-2 0 2

1 > +6.0σ
7 < -6.0σ

bad:406=0.098% λ (Å) z = 0.60000