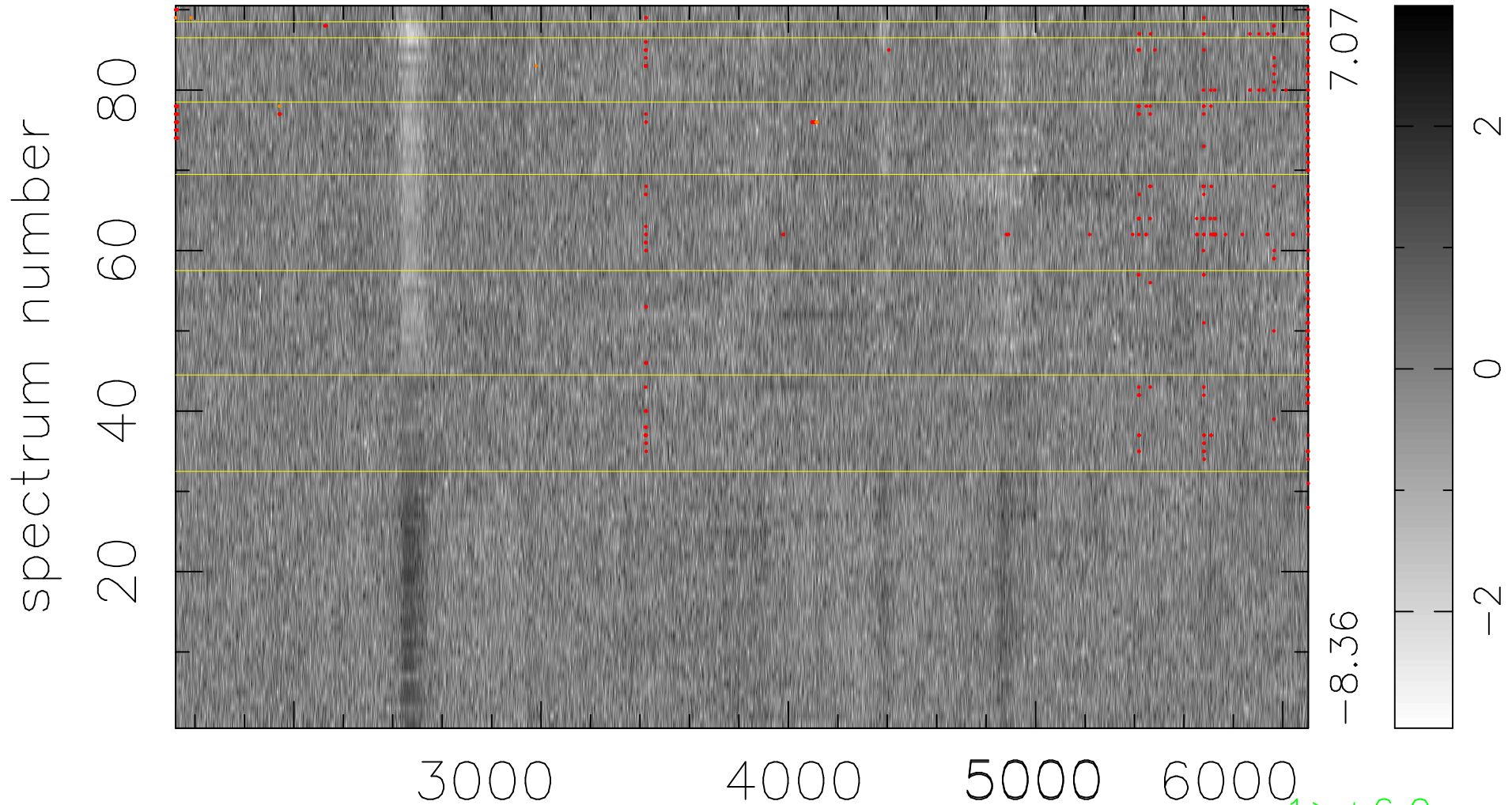


$$\chi(\lambda,t) = (\text{Data} - \text{Model } AC_5) / \sigma \chi$$

$$\chi^2 / (412380 - 4879) = 1.015 \Rightarrow 1.005$$

4582x90



bad:406=0.098% λ (Å) $z = 0.600000$

1 > +6.0σ

9 < -6.0σ