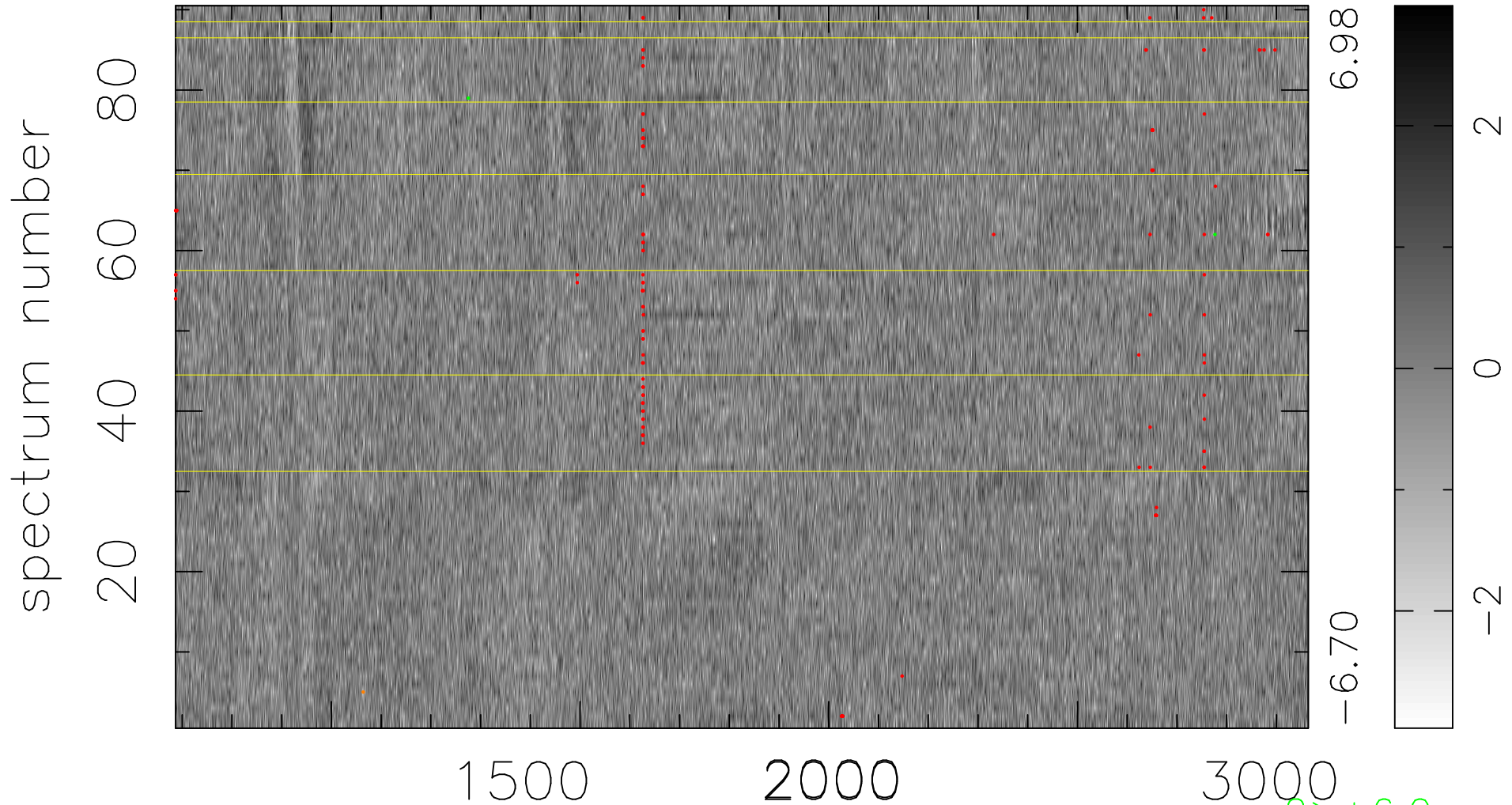


$$\chi(\lambda, t) = ( \text{Data} - \text{Model } \text{AC}_5\text{B}_7\text{F} ) / \sigma \chi$$

$$\chi^2 / (409950 - 5459) = 0.902 \Rightarrow 1.005$$

4555x90



bad:135=0.033%  $\lambda$  (Å)  $z = 2.32065$

2 > +6.0 $\sigma$

1 < -6.0 $\sigma$