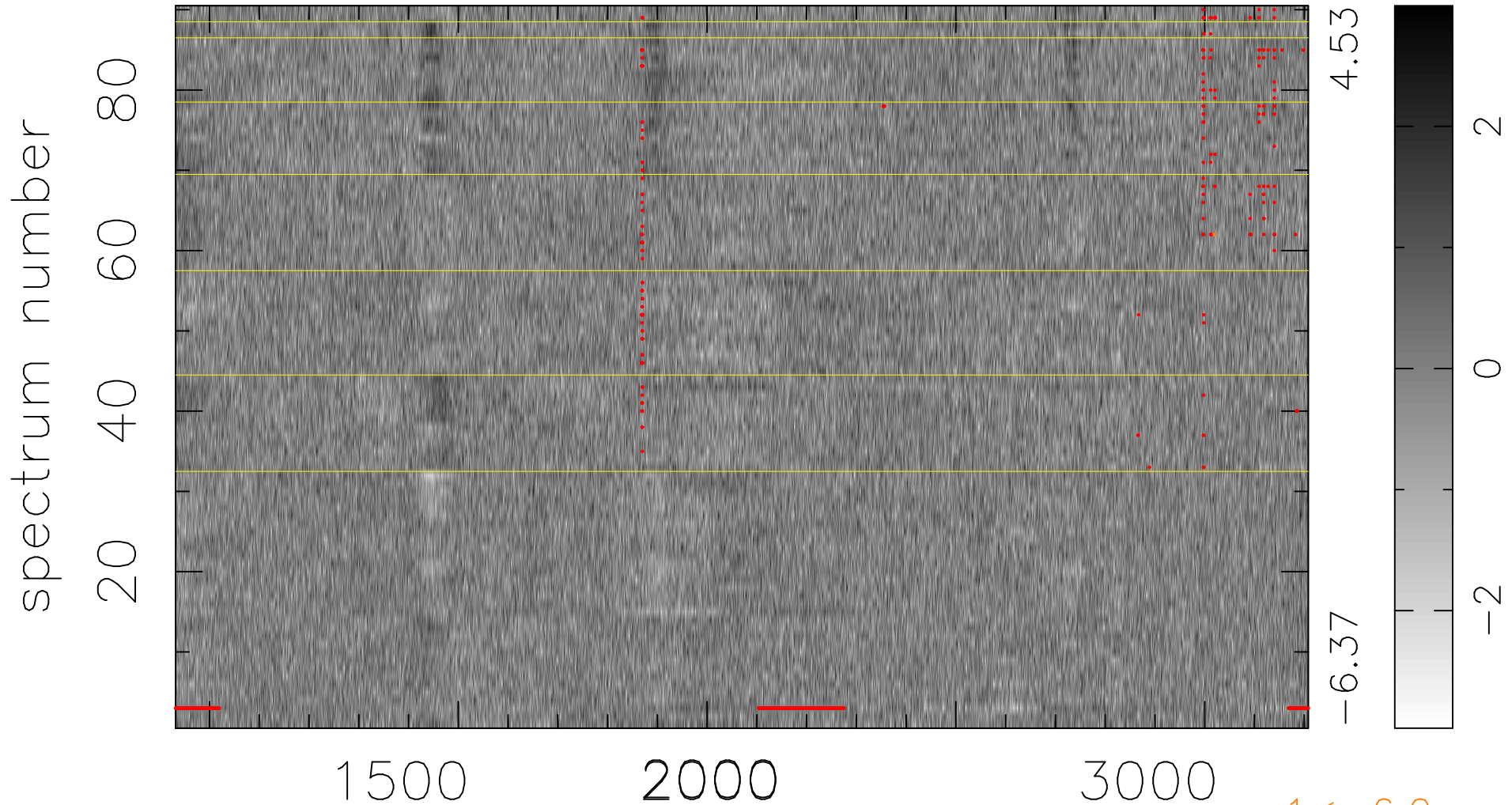


$$\chi(\lambda,t) = (\text{Data} - \text{Model } AC_5) / \sigma \chi$$

$$\chi^2 / (409770 - 5126) = 0.914 \Rightarrow 1.008$$

4553x90



4.53

-6.37

1 < -6.0σ

bad:815=0.20% λ (Å) z = 1.96894