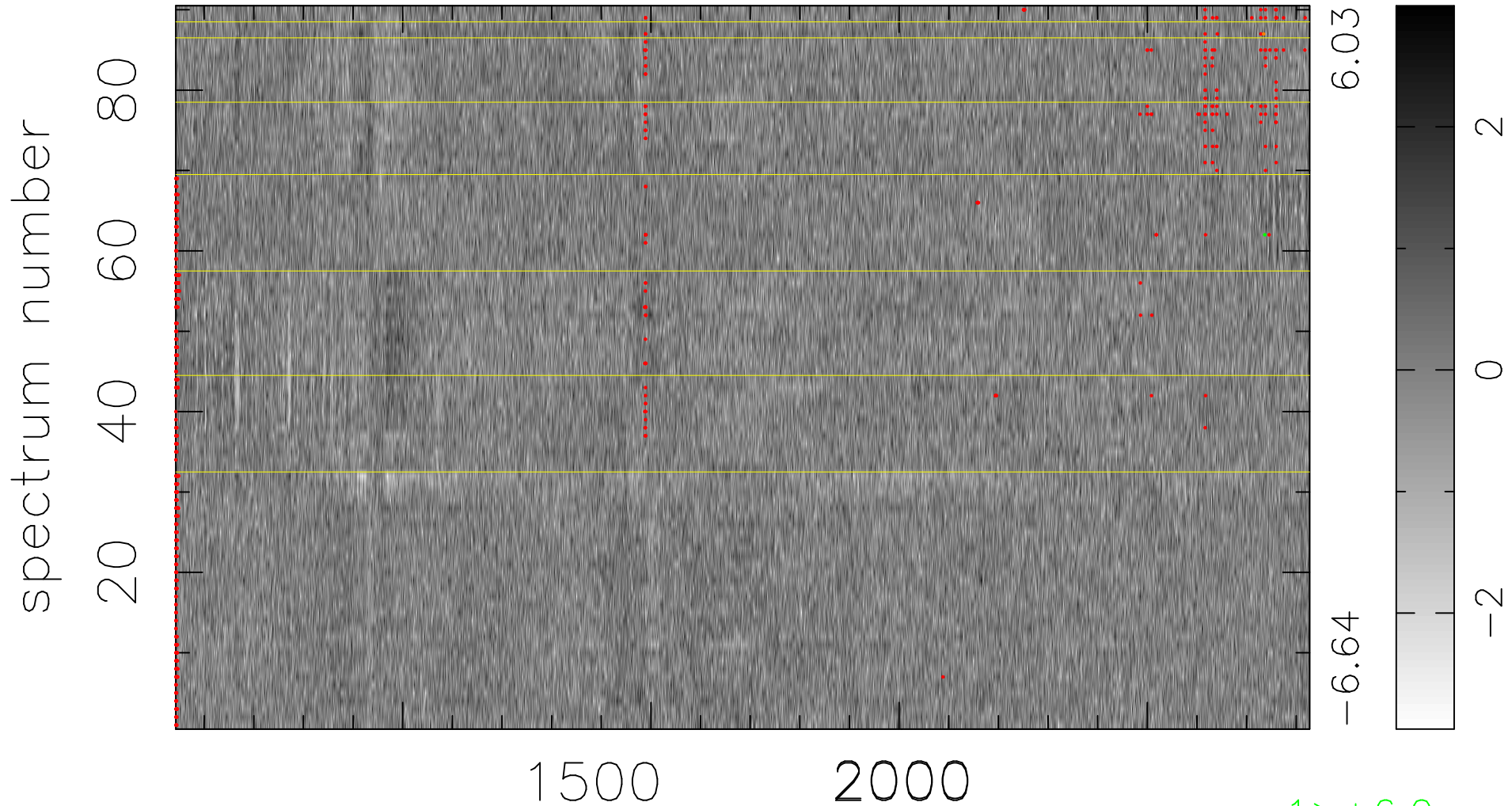


$$\chi(\lambda, t) = (\text{Data} - \text{Model } \text{AC}_5\text{B}_7\text{F}) / \sigma \chi$$

$$\chi^2 / (411210 - 5464) = 0.929 \Rightarrow 1.005$$

4569x90



bad:602=0.15%

λ (Å) $z = 2.53757$

1 > +6.0 σ

1 < -6.0 σ