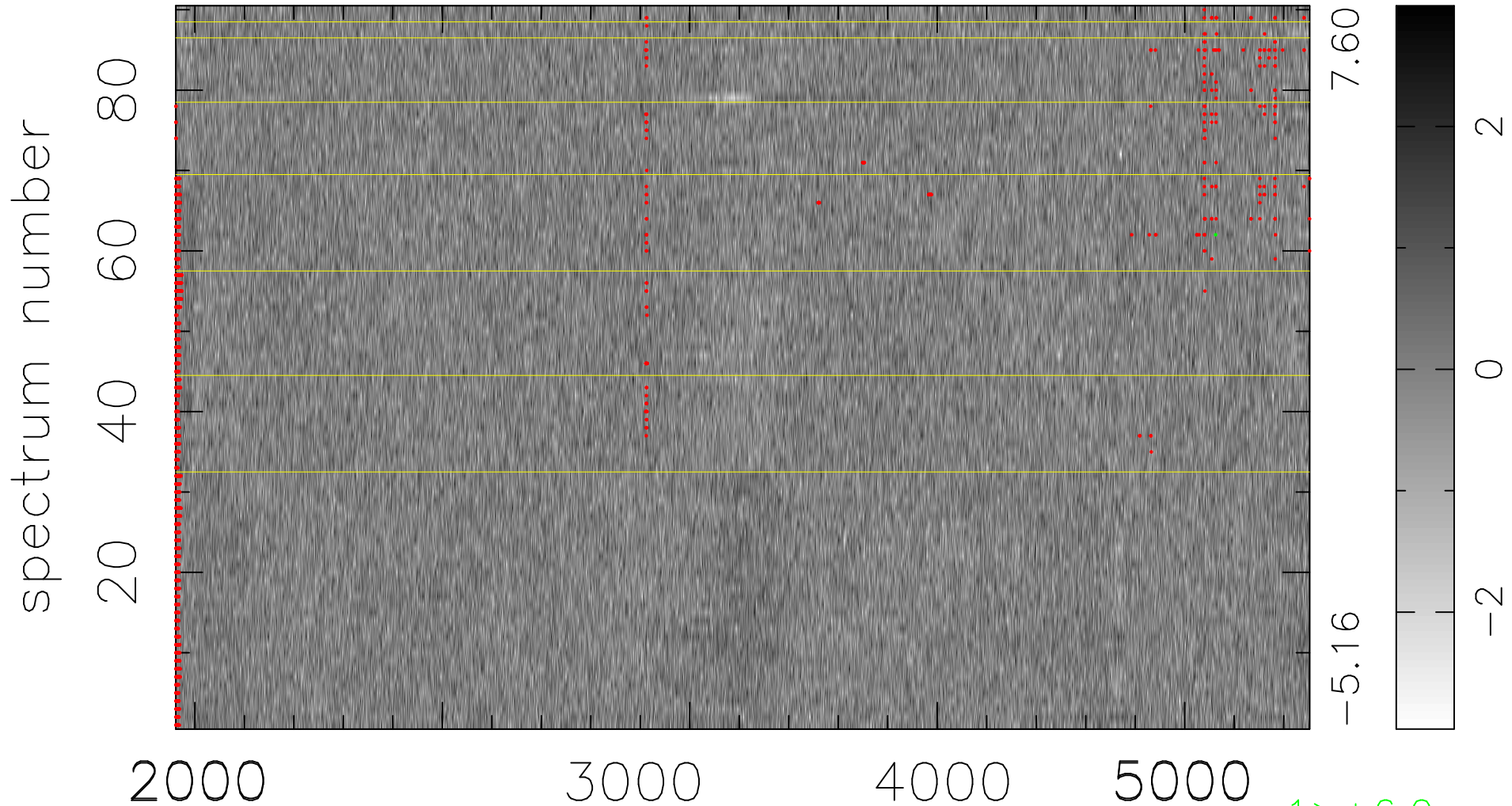


$$\chi(\lambda, t) = ( \text{Data} - \text{Model } \text{AC}_5\text{B}_3\text{F} ) / \sigma \chi$$

$$\chi^2 / (412470 - 5107) = 0.910 \Rightarrow 1.007$$

4583x90



bad:1341=0.33%  $\lambda$  (Å)  $z = 0.83660$