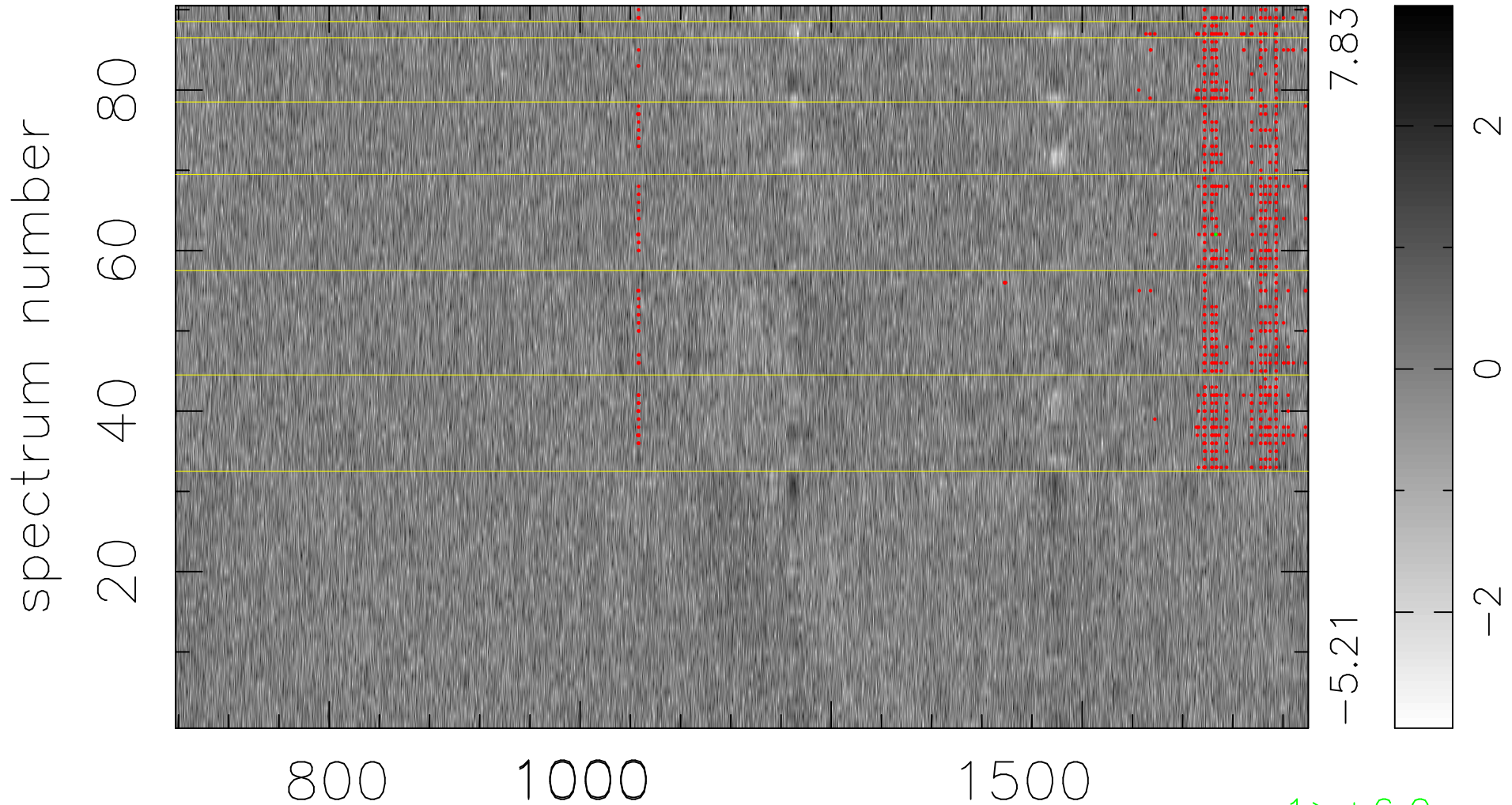


$$\chi(\lambda,t) = ( \text{Data} - \text{Model } AC_5 ) / \sigma \chi$$

$\chi^2 / (406170 - 5096) = 0.928 \Rightarrow 1.004$

4513x90



bad:802=0.20%

$\lambda$  (Å)  $z = 4.28761$

$1 > +6.0\sigma$