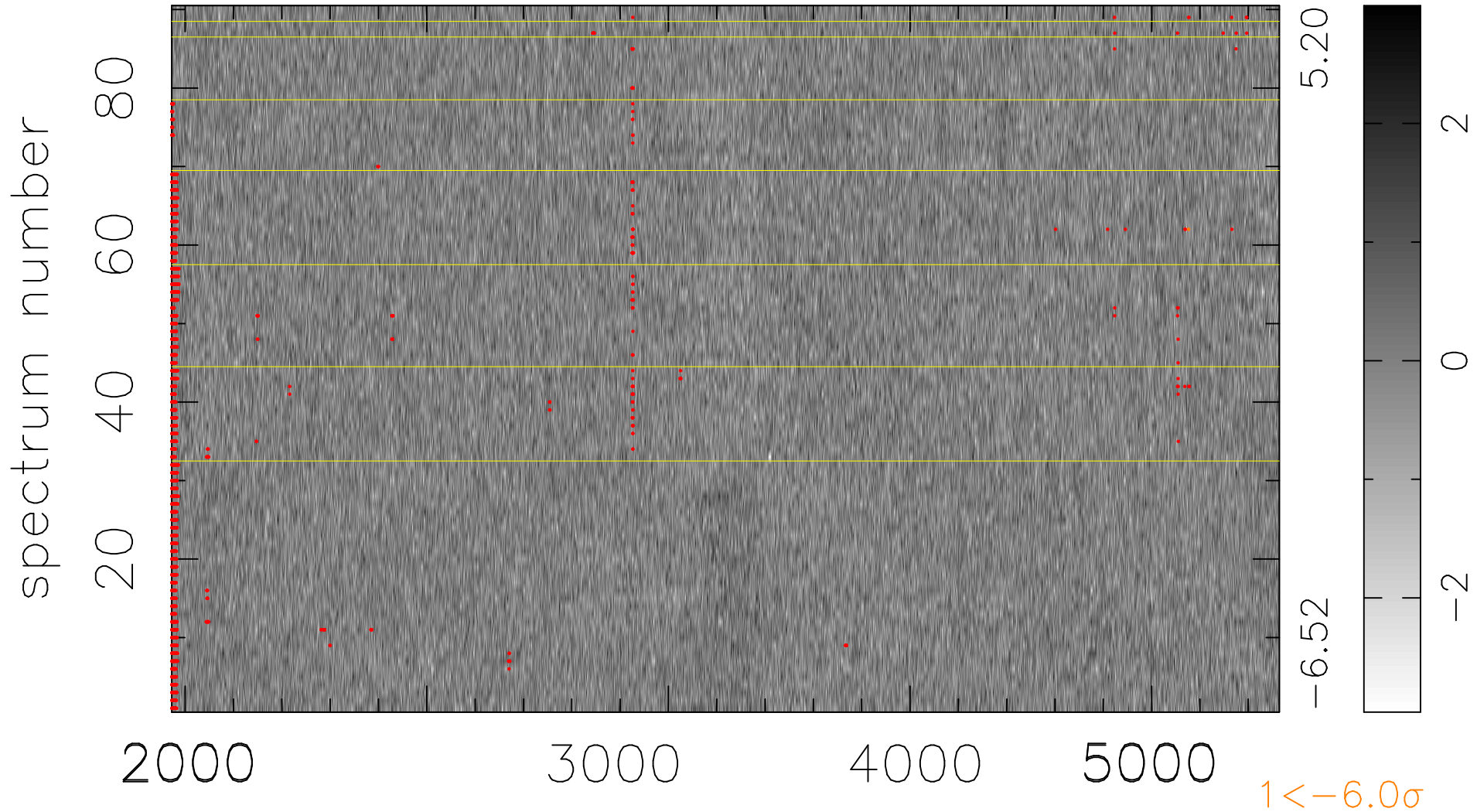


$$\chi(\lambda, t) = (\text{Data} - \text{Model } \text{AC}_5\text{B}_3\text{F}) / \sigma \chi$$

$$\chi^2 / (412650 - 5134) = 0.933 \Rightarrow 1.007$$

4585x90



bad:1776=0.43% λ (Å) $z = 0.82501$